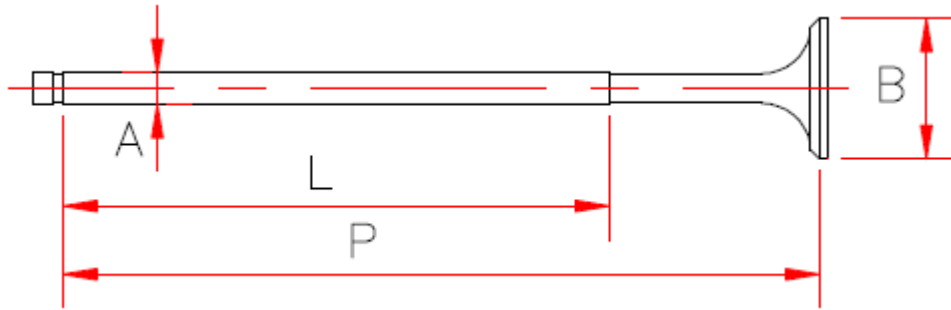


## VR7 Optional Chuck Capacities



	<b>Small Chuck</b> Rottler Part# VR7CHUCK-NANO	<b>Standard Chuck</b> Rottler Part# VR7CHUCK-STD	<b>Large Chuck</b> Rottler Part# VR7CHUCK-LRG
<b>'A' Minimum</b>	0.138" (3.5mm)	0.157" (4mm)	0.533" (11mm)
<b>'A' Maximum</b>	0.279" (7.1mm)	0.551" (14mm)	0.815" (20.7mm)
<b>'L' Minimum</b>	1.219" (31mm)	2.125" (54mm)	2.125" (54mm)
<b>'L' Maximum</b>	7.875" (200mm)	10.234" (260mm)	10.234" (260mm)
<b>'B' Minimum (30°)</b>	0.672" (17mm)	1.000" (25mm)	1.000" (25mm)
<b>'B' Maximum (30°)</b>	1.187" (30mm)	4.000" (102mm)	4.000" (102mm)
<b>'B' Minimum (45°)</b>	0.625" (16mm)	0.787" (20mm)	0.787" (20mm)
<b>'B' Maximum (45°)</b>	0.859" (22mm)	3.500" (89mm)	3.500" (89mm)
<b>'P' Minimum</b>	2.562" (65mm)	3.562" (90mm)	3.562" (90mm)
<b>'P' Maximum</b>	11.031" (280mm)	12.406" (315mm)	12.406" (315mm)

### Chuck Data

	<b>Small Chuck</b> Rottler Part# VR7CHUCK-NANO	<b>Standard Chuck</b> Rottler Part# VR7CHUCK-STD	<b>Large Chuck</b> Rottler Part# VR7CHUCK-LRG
<b>Ball Diameter</b>	0.275" (7mm)	0.562" (14.29mm)	0.500" (12.7mm)
<b>Center Distance of Balls</b>	0.983" (25mm)	1.875" (48mm)	1.875" (48mm)