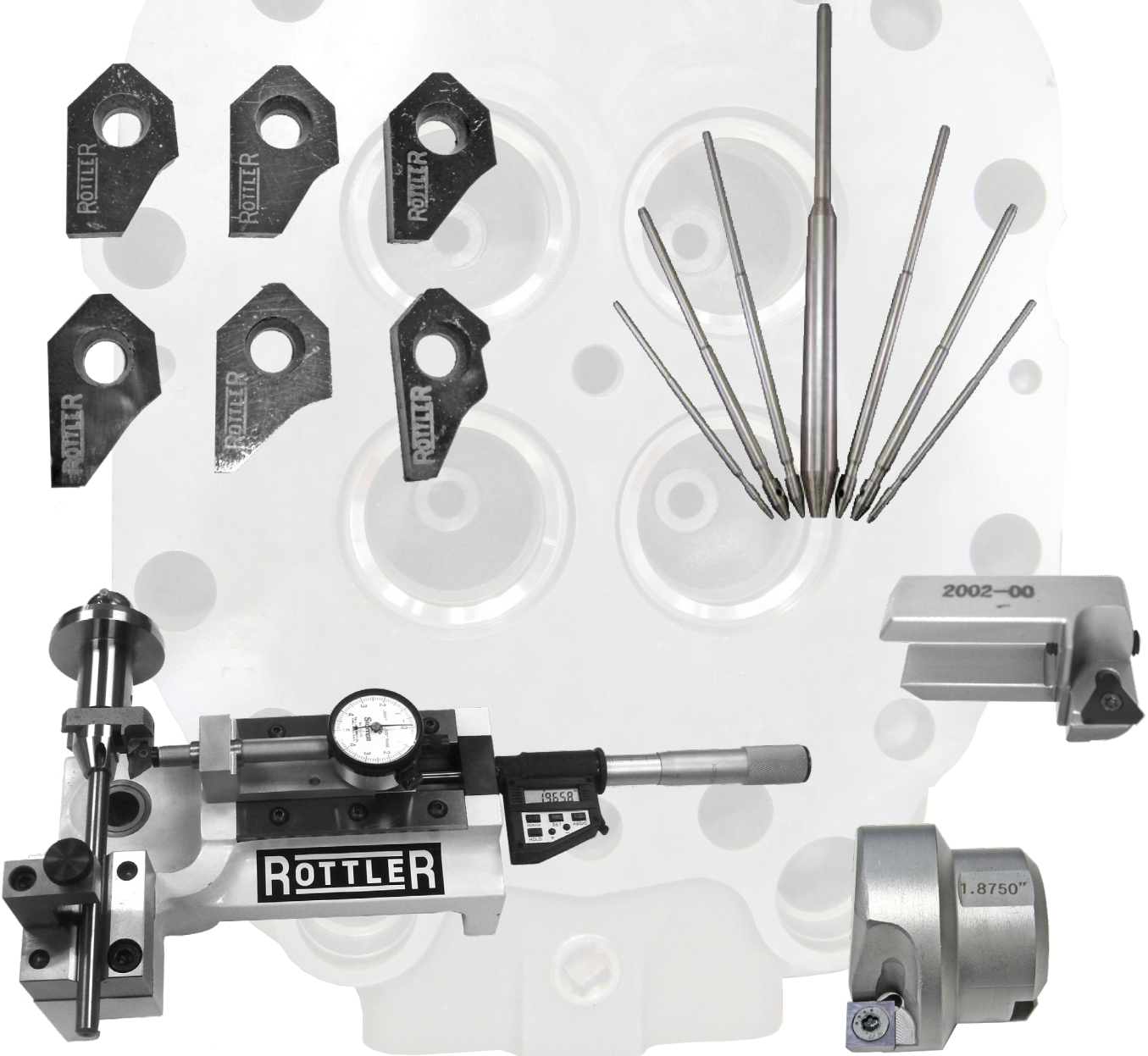


ROTTLER

SG80MTS OPTIONAL EQUIPMENT CATALOG



ORDERING PROCEDURE

Contact your regional Rottler sales rep for assistance in ordering optional equipment, replacement parts, or tooling.

If you are unable to contact your regional Rottler sales rep, call the factory at 253-872-7050 and ask to speak to the parts sales specialist.

Have the following information handy to expedite the ordering process:

1. Your name, business name, and contact number
2. Customer number
3. If you don't have a customer number, your billing address
4. Shipping address if different from billing address
5. Machine model and serial number
6. Part number and description of what you want to order
7. Preferred method of shipment

You may also contact us via e-mail with the above information. Send e-mail requests to: parts@rottermfg.com or intlparts@rottermfg.com

In some cases you may be requested to send a photo of the part you are ordering if it is a replacement part, or doesn't appear in the database.

If you are unsure which part you need to order, contact our service department and ask to speak to one of our service consultants. They will assist you in determining which part you require.

THERE IS A MINIMUM ORDER OF \$25.00

Contents

Optional Fixtures	1
MAN-FIX -SG80 Universal Manual 360 Degree Roll Over Fixture	1
PER-FIX-MH-CAT3500	2
MULTIHEADFIX	2
2DEGREE-TILT	3
CANTEDFIX	3
7242N Clamp Tower Assembly	4
Rottler UNIPILOT Spindle Adapters and Tool Holders.....	5
RBHAR40UPT2 UNIPILOT Spindle Adapter	5
UPT5200SH UNIPILOT Tool Holder	5
UPT5400SH UNIPILOT Tool Holder	5
Spherical Self Aligning Spindle Adapters	6
RBHAR40 Spring Free Spherical Self Aligning Spindle Adapter	6
Suggested Tool holders and Insert Holders	6
BH20-R Spring Free Spherical Self Aligning Large Tool Holder	6
BH20-RW Spring Free Spherical Self Aligning Extra Large Tool Holder.....	6
BH20-RW2 New Rottler Spring Free Spherical Self aligning Extra Large Tool Holder	6
BH375WR1 Spring Free Spherical Self Aligning Tool Holder.....	7
BH375R1 Spring Free Spherical Self Aligning Tool Holder	7
Large Insert Holders Range (3.543” to 5.900” / 90.00mm to 150.00mm).....	7
TH3005.....	7
TH3006.....	7
TH3007.....	7
TH3008.....	7
TH3005-00.....	8
TH3005-10.....	8
TH3005-20.....	8
TH3005-30.....	8
TH3005-35.....	8
TH3005-45.....	8
TH3005-60.....	8
Insert Holders to be used with BH375-WR1 and BH375-R1 Tool Holders.....	9
TH1999 Tip Holder	9
TH2000 Tip Holder	9
TH2001 Tip Holder	9

TH2002 Tip Holder	9
TH2003 Tip Holder	9
TH2004 Tip Holder	9
TH2005 Tip Holder	10
Triangular Insert Tip Holders.....	10
TH2000-00.....	10
TH2001-00.....	10
TH2002-00.....	10
TH2002-20.....	10
TH2002-30.....	11
TH2002-45.....	11
TH2003-00.....	11
TH2003-20.....	11
TH2003-30.....	11
TH2003-45.....	11
TH2004-00.....	12
TH2004-20.....	12
TH2004-30.....	12
TH2004-45.....	12
Insert Holder for Large Seat to be Used Only on BH375W-RI.....	13
TH2005-00.....	13
TH2005-20.....	13
TH2005-30.....	13
TH2005-45.....	13
Triangular Inserts and T-7 Torx Driver for Insert Holders.....	14
RT211 Triangular Insert.....	14
RT212 Triangular Insert.....	14
RT321 Triangular Insert.....	14
RT322 Triangular Insert.....	14
RT211CBN	14
RT321CBN	14
T7D T7 Torx Driver.....	14
Pre-Settable Adjustable Diameter Valve Seat Housing Cutterheads.....	15
7630D Pre-settable Adjustable Diameter Valve Seat Housing Cutterhead	15
7630 Pre-Settable Adjustable Diameter Valve Seat Housing Cutterhead.....	15
7630G Pre-Settable Adjustable Diameter Valve Seat Housing Cutterhead.....	15

Rottler R40 Taper Spindle Adapters	16
COLLETKITR40.....	16
SAD375R40EL4 Spindle Adapter	16
SAD750R40 Spindle Adapter	16
R40MT2 Adapter for Morse #2 to Rottler ISO 40 Spindle Taper	17
R40MT3 Adapter for Morse #3 to Rottler ISO 40 Spindle Taper	17
R40MT2EL2 Adaptor for Morse #2 to Rottler ISO 40 Spindle Taper (2" Extended Length)	17
Suggested Basic Tooling	18
T7D.....	18
T8D.....	18
T15D.....	18
PRW20	18
PRW375	18
ALLEN-KEYS-IN.....	19
ALLEN-KEYS-MM	19
Micrometers Setting Fixtures and Measurement Tools	19
CALFIXT20	19
DSP20	20
DSP	20
BM20	21
BM	21
6-1SETTINGFIX	22
VSG102-375.....	22
VSG2000	23
502-11-39L	23
502-11-39D.....	23
Pre-settable Adjustable Diameter Valve Seat Housing Cutterheads	24
7630 Pre-settable Adjustable Diameter Valve Seat Housing Cutterhead	24
7630D Pre-settable Adjustable Diameter Valve Seat Housing Cutterhead	24
VALVE SEAT CUTTING INSERTS	25
Cutting Insert Sharpener for Multi Angle Inserts	25
BWSD20 Heavy Duty Diamond Wheel Insert Sharpener.....	25
BWS02 Diamond Wheel Cutting Bit Sharpener - Single Wheel	26
Rottler Special Profile Cutter Inserts Policy	27
Available Carbide Pilots by Diameter and Length.....	27
Modular Pilots by Diameter and Length.....	28

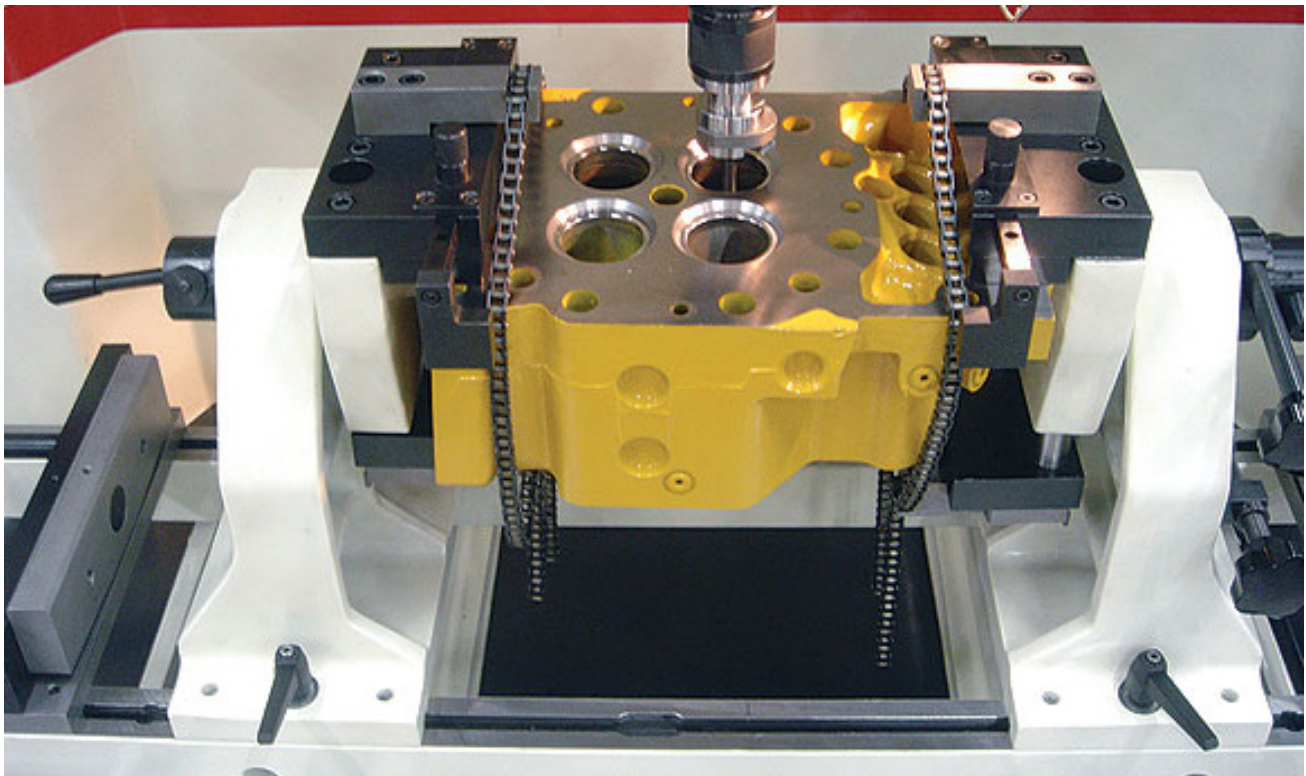
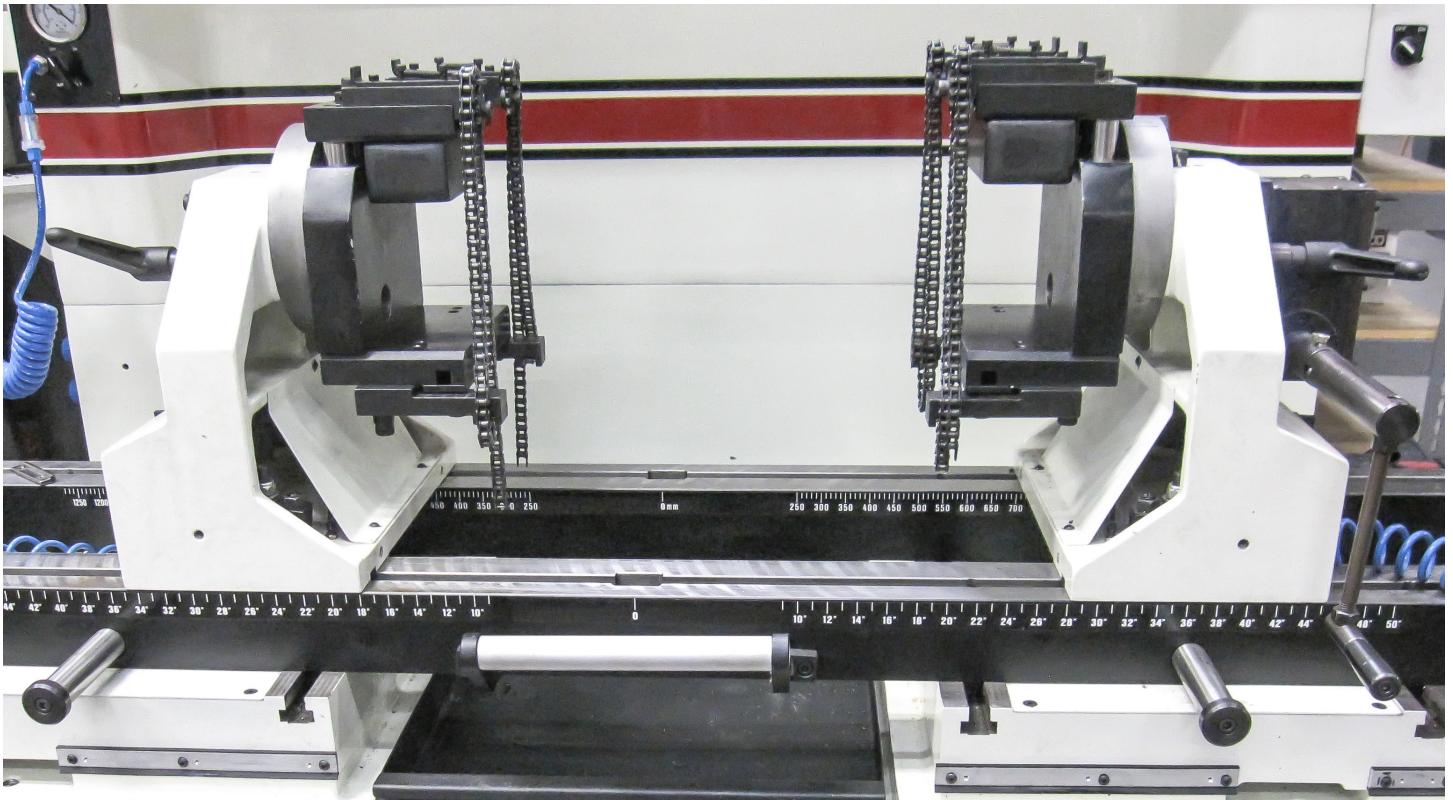
Miscellaneous Tooling	28
COLLETKITR40.....	28
ER40-250	29
ER40-312	29
ER40-343	29
ER40-375	29
ER40-437	29
ER40-500	29
ER40-562	29
ER40-750	29
ER40-875	29
ER40-1000	29
ER40SW.....	29
COLLET40-BOX	30
CCWSETR40	30
PC750R40.....	30
CDR312 Combo Core drill / Reamer	31
CDR343 Combo Core drill / Reamer	31
CDR375 Combo Core drill / Reamer	31
VSD100-KIT Valve Seat Driver Kit	32
VGD-KIT Valve Guide Driver Kit	33
VGTC-KIT3 Valve Guide Top Cutter Kit	33
Fixed Double Insert Milling Heads	34
FMH10000R1 1.0000" Fixed Double Replaceable Insert Milling Head.....	34
FMH10625R1 1.0625" Fixed Double Replaceable Insert Milling Head.....	34
FMH11250R1 1.1250" Fixed Double Replaceable Insert Milling Head.....	34
FMH11875R1 1.1875" Fixed Double Replaceable Insert Milling Head.....	34
FMH12460R1 1.2460" Fixed Double Replaceable Insert Milling Head.....	34
FMH12480R1 1.2480" Fixed Double Replaceable Insert Milling Head.....	34
FMH12500R1 1.2500" Fixed Double Replaceable Insert Milling Head.....	35
FMH13125R1 1.3125" Fixed Double Replaceable Insert Milling Head.....	35
FMH13750R1 1.3750" Fixed Double Replaceable Insert Milling Head.....	35
FMH14375R1 1.4375" Fixed Double Replaceable Insert Milling Head.....	35
FMH15000R1 1.5000" Fixed Double Replaceable Insert Milling Head.....	35
FMH15625R1 1.5625" Fixed Double Replaceable Insert Milling Head.....	35
FMH16250R1 1.6250" Fixed Double Replaceable Insert Milling Head.....	36
FMH16870R1 1.6870" Fixed Double Replaceable Insert Milling Head.....	36
FMH16875R1 1.6875" Fixed Double Replaceable Insert Milling Head.....	36
FMH17500R1 1.7500" Fixed Double Replaceable Insert Milling Head.....	36

FMH18125R1 1.8125" Fixed Double Replaceable Insert Milling Head.....	36
FMH18750R1 1.8750" Fixed Double Replaceable Insert Milling Head.....	36
FMH19370R1 1.9370" Fixed Double Replaceable Insert Milling Head.....	37
FMH19375R1 1.9375" Fixed Double Replaceable Insert Milling Head.....	37
FMH20000R1 2.0000" Fixed Double Replaceable Insert Milling Head.....	37
FMH20625R1 2.0625 Fixed Double Replaceable Insert Milling Head.....	37
FMH21250R1 2.125" Fixed Double Replaceable Insert Milling Head.....	37
FMH22500R1 2.250" Fixed Double Replaceable Insert Milling Head.....	37
Consumable Parts for Seat and Guide Models.....	38
SLEEVER1 Spindle Adapter Replacement Sleeve	38
BSW002 Diamond Wheel	38
VT-FP1562 Replacement Foam Pad.....	38
VT-FP1875 Replacement Foam Pad.....	38
VT-FP2125 Replacement Foam Pad.....	38
VT-FP3125 Replacement Foam Pad.....	38
VT-FP25X22 Replacement Foam Pad	38
VT-FP31X20 Replacement Foam Pad	38
VT-FP33X27 Replacement Foam Pad	38
PRW600PIN Replaceable Pin.....	39
PRW375PIN Replaceable Pin.....	39
PRW20PIN Replaceable Pin.....	39
511-29-12E Torx Screw.....	39
T7D T7 Torx Driver.....	39
T8S T8 Torx Tip Holding Screws	39
T15S T15 Torx Tip Holding Screws	39
S1032-250 BH375R1 and BH600R1 Tip Holder Locking Screw.....	39
S250-28-250 BH375WR1 Tip Holder Locking Screw	39
S1032-437 TH1999 Adjusting Screw	39
S1032-375 TH2000 Adjusting Screw	39
S1032-500 TH2001 Adjusting Screw	39
S1032-625 TH2002 Adjusting Screw	39
S500-1600 TH2003 Adjusting Screw	39
S600-2015 TH2004 Adjusting Screw	39
ICC003 Insert, Indexable Carbide.....	39
ICC002 Insert, Indexable Carbide.....	39

Optional Fixtures

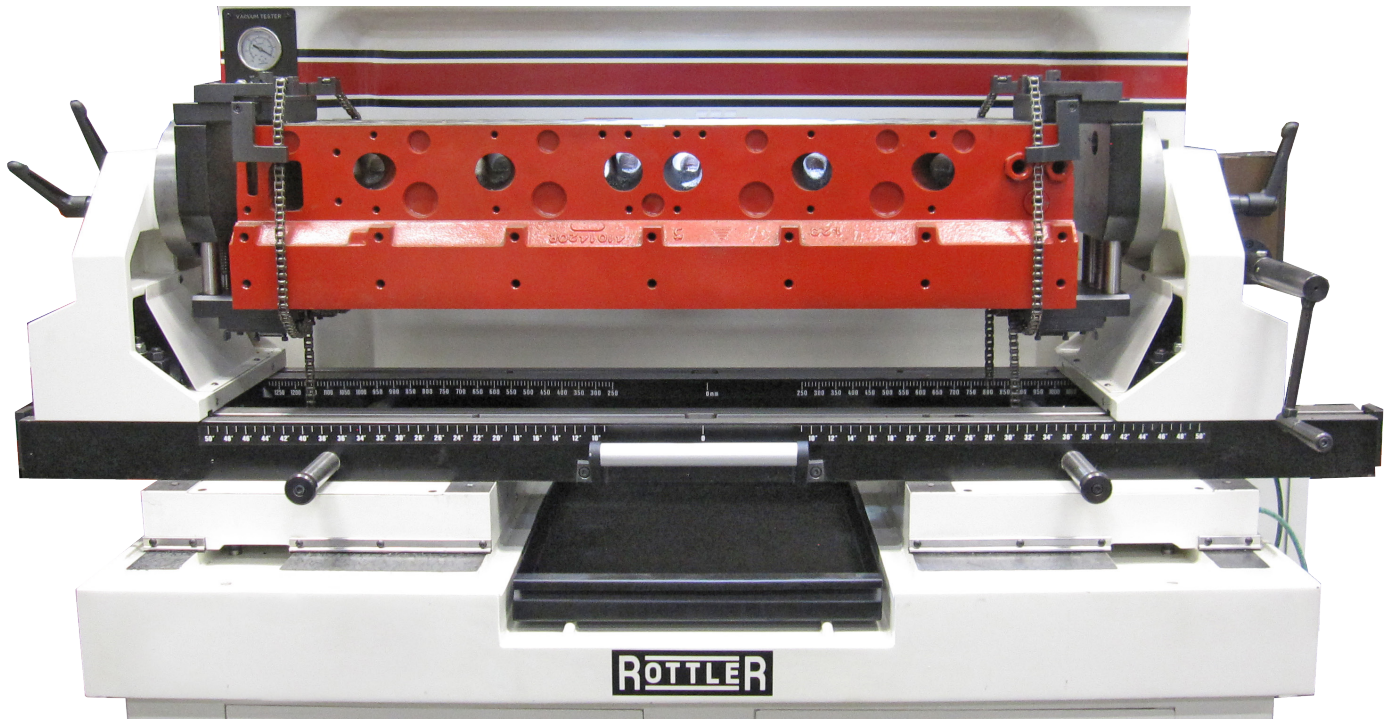
MAN-FIX -SG80 Universal Manual 360 Degree Roll Over Fixture

With Safety Chains for Large Cylinder Heads - fixture air floats on table during set up.



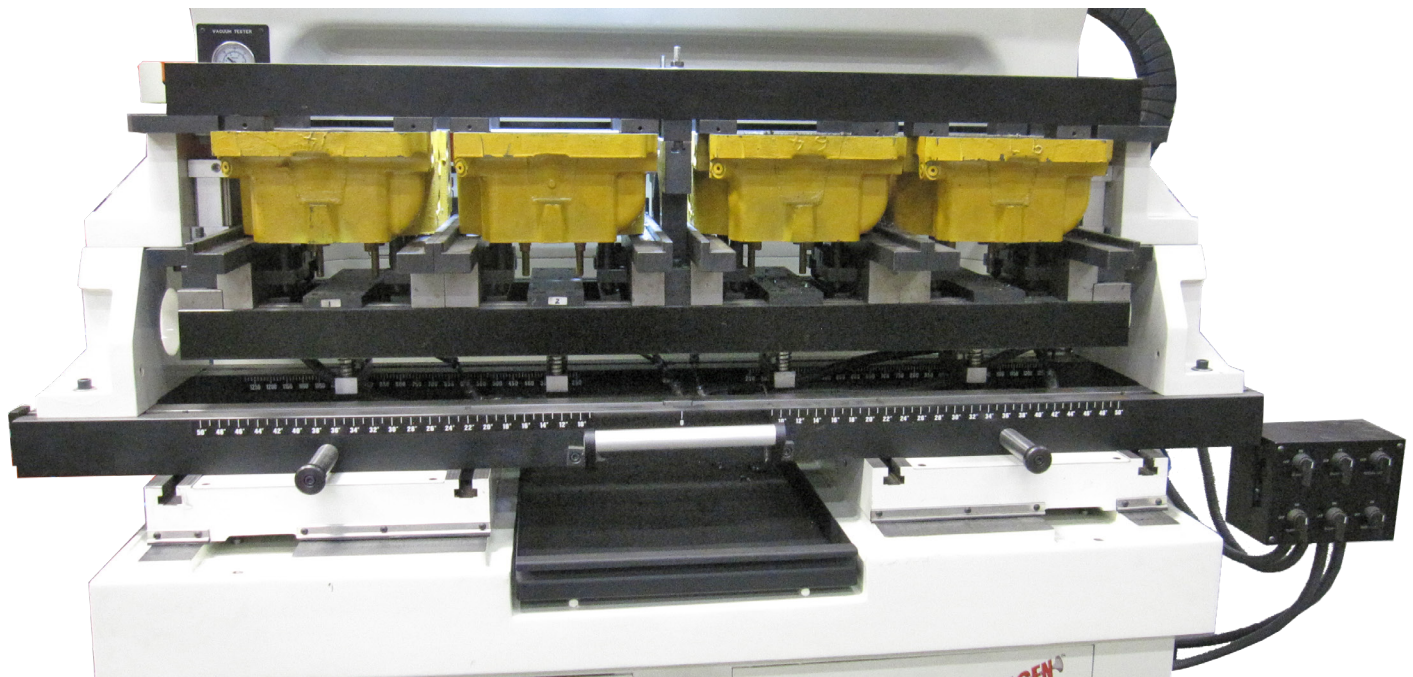
PER-FIX-MH-CAT3500

Pneumatic Up clamping Production Fixture for 4 CAT3500 Cylinder Heads.



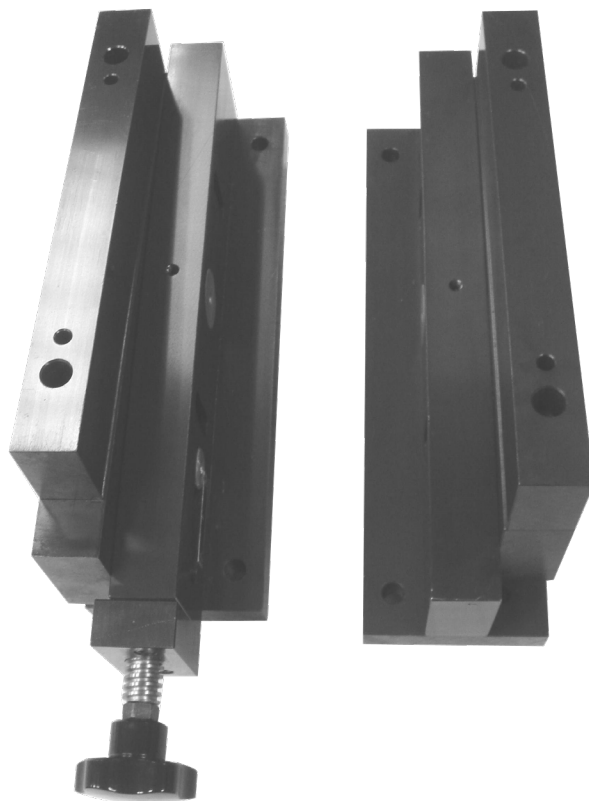
MULTIHEADFIX

Multi Cylinder Head Fixture. Holds up to four CAT3500 and five Jenbacher Heads, requires MAN-FIX-SG80 Roll Over Fixture



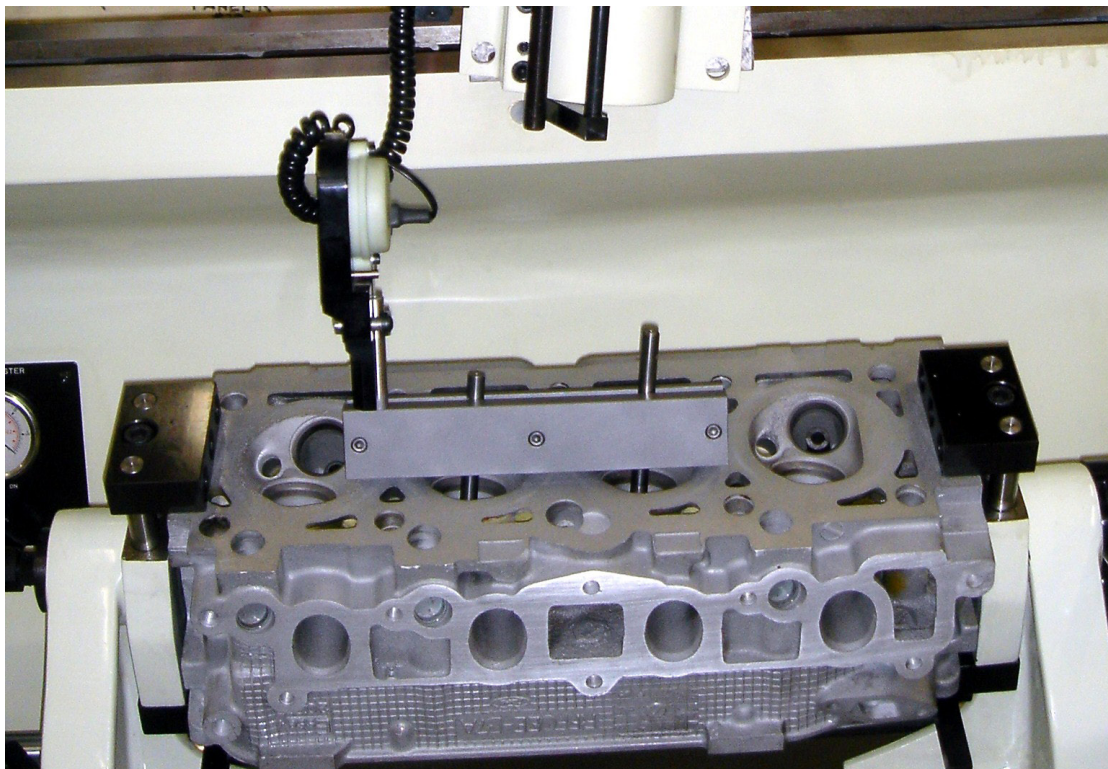
2DEGREE-TILT

Tilt Fixtures for large single cylinder head applications including adjustable base plate, Set of two 1-7/8" and 4" parallels; requires one set of Clamp Towers (7242N)



CANTEDFIX

Canted Fixture for leveling Canted cylinder heads on any fixed pilot Seat and Guide Machine



7242N Clamp Tower Assembly
Complete with Lower Base Plates



Rottler UNIPILOT Spindle Adapters and Tool Holders

RBHAR40UPT spindle adapter can be assembled with UPT5200SH and UPT5400SH for complete quick change UNIPILOT tooling for production applications.

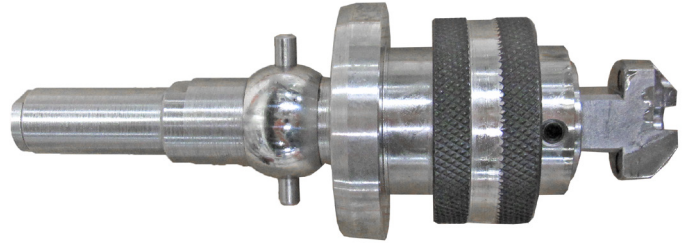
RBHAR40UPT2 UNIPILOT Spindle Adapter

Extended 2" 50mm for new version SG80A spindle for use with UPT5200SH and UPT5400SH Tool holders .



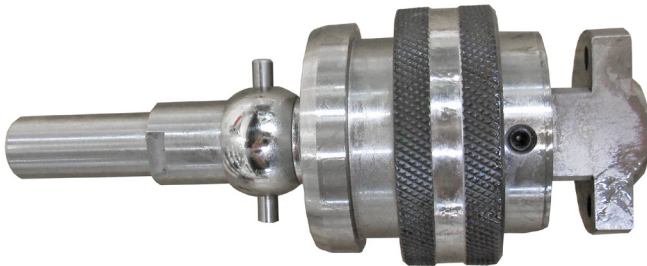
UPT5200SH UNIPILOT Tool Holder

For .375" (9.52mm) UNIPILOTS, for SG80A and SG80MTS models only, for use with TH2000, TH2001, TH2002 for Valve Seat diameter range 0.570 - 2.3600" (14.48 - 60.00mm)



UPT5400SH UNIPILOT Tool Holder

For .375" (9.52mm) UNIPILOTS, for SG80A and SG80MTS models only, for use with TH2003, TH2004, TH2005 for Valve Seat diameter range 1.27" (32.26mm) - 4.724" (120mm)



Spherical Self Aligning Spindle Adapters

For Fixed Pilot applications

RBHAR40 Spring Free Spherical Self Aligning Spindle Adapter

Patented for Rottler ISO 40 Spindle Taper for large 1.500: Diameter spherical heads



Suggested Tool holders and Insert Holders

For 20.00mm and .375" Pilot Shank Diameters

BH20-R Spring Free Spherical Self Aligning Large Tool Holder

For 20.00mm shank Pilots For TH3005 & TH3006 Tip Holders from 2.362 - 4.330" (60 - 110mm) diameter seats



BH20-RW Spring Free Spherical Self Aligning Extra Large Tool Holder

For 20.00mm shank Pilots For TH3007 & TH3008 Tip Holders from 3.740 - 5.905" (95 - 150mm) diameter seats



BH20-RW2 New Rottler Spring Free Spherical Self aligning Extra Large Tool Holder

For 20.00mm shank Pilots For TH3007 & TH3008 Tip Holders from 4.72" - 6.30" (120-160mm) diameter seats



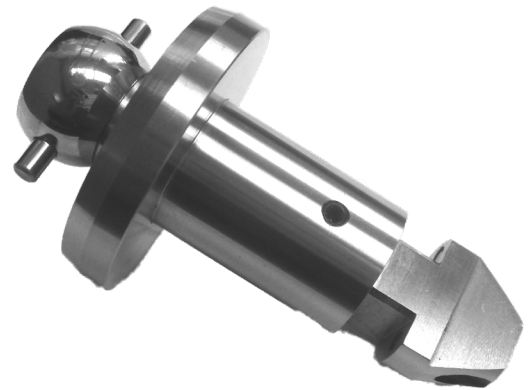
BH375WR1 Spring Free Spherical Self Aligning Tool Holder

For large diameter - Diesel Applications, For TH2003 & TH2004 Tip Holders from 1.570 - 3.150" (40 - 80mm)



BH375R1 Spring Free Spherical Self Aligning Tool Holder

For Small and Mid-Size Diameter. For Insert Holders TH2000, TH2001, TH2002 Automotive Applications From .750 - 2.400" (20 - 60mm)

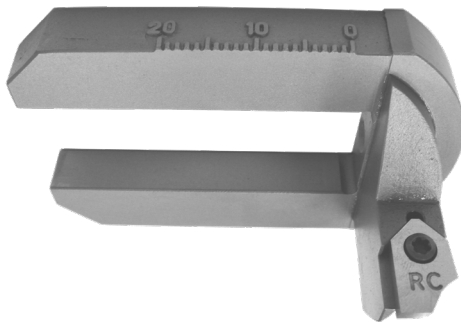


Large Insert Holders Range (3.543" to 5.900" / 90.00mm to 150.00mm)

To be used with BH20-R and BH20-RW

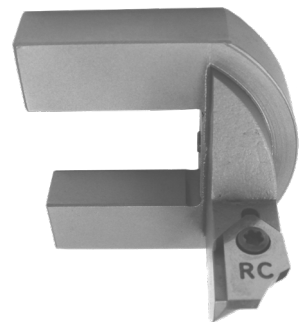
TH3005

For RCC style Insert only using RBH20-RW Large tool holder. Range 3.543 - 5.905" (90.00 - 150.00mm)



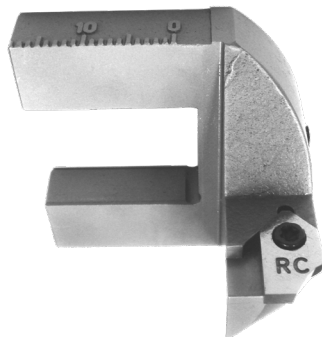
TH3006

For RCC style Insert only using RBH20-RW Large tool holder. Range 3.700 - 4.606" (94.00 - 117.00mm)



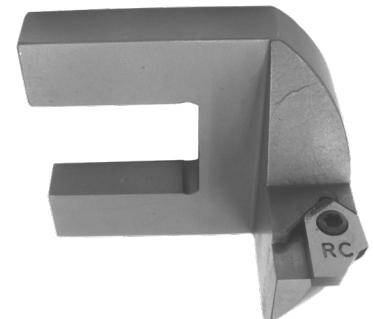
TH3007

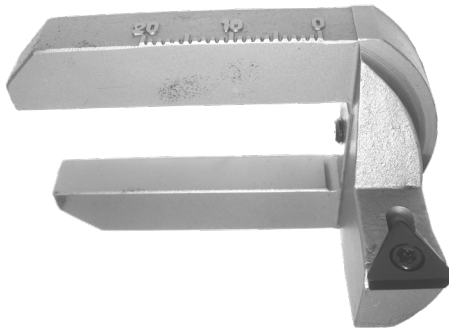
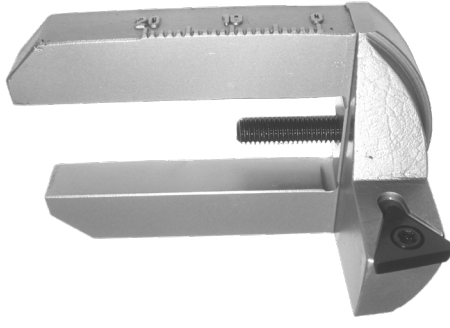

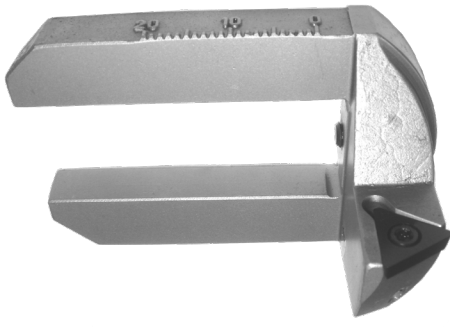
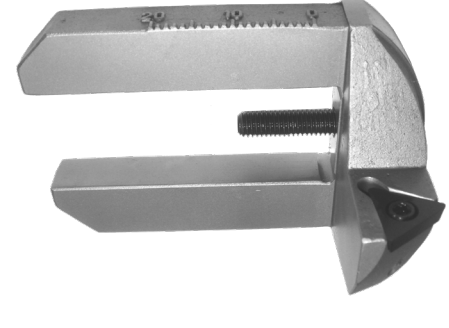
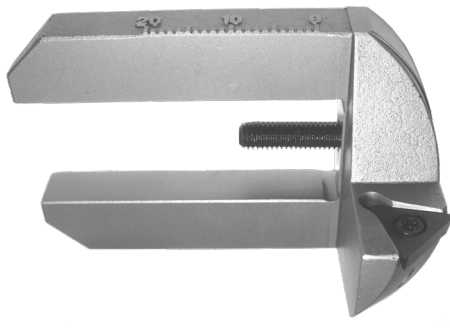
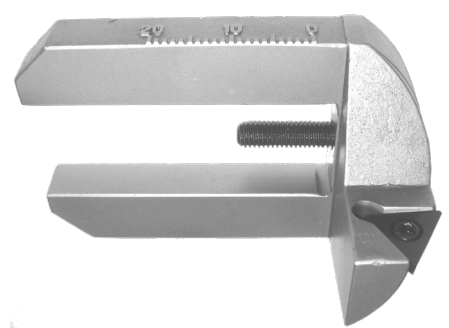
For RCC style Insert only using RBH20-RW Large tool holder. Range 4.370 - 5.236" (111.00 - 133.00mm)



TH3008

For RCC style Insert only using RBH20-RW Large tool holder. Range diameter 5.039 - 5.905" (128.00 - 150.00mm)



<p>TH3005-00 00 Degree using triangular Rottler style insert RT322 on the RBH20-RW Large tool holder. Range 3.543 - 5.905" (90.00 - 150.00mm) (for counterboring large diameter seats)</p> 	<p>TH3005-10 10 Degree using triangular Rottler style insert RT322 on the RBH20-RW Large tool holder. Range 3.543 - 5.905" (90.00 - 150.00mm) (FOR HARD SEAT APPLICATIONS)</p> 
<p>TH3005-20 20 Degree using triangular Rottler style insert RT322 on the RBH20-RW Large tool holder. Range 3.543 - 5.905" (90.00 - 150.00mm) (FOR HARD SEAT APPLICATIONS)</p> 	<p>TH3005-30 30 Degree using triangular Rottler style insert RT322 on the RBH20-RW Large tool holder. Range 3.543 - 5.905" (90.00 - 150.00mm) (FOR HARD SEAT APPLICATIONS)</p> 
<p>TH3005-35 35 Degree using triangular Rottler style insert RT322 on the RBH20-RW Large tool holder. Range 3.543 - 5.905" (90.00 - 150.00mm) (FOR HARD SEAT APPLICATIONS)</p> 	<p>TH3005-45 45 Degree using triangular Rottler style insert RT322 on the RBH20-RW Large tool holder. Range 3.543 - 5.905" (90.00 - 150.00mm) (FOR HARD SEAT APPLICATIONS)</p> 
<p>TH3005-60 60 Degree using triangular Rottler style insert RT322 on the RBH20-RW Large tool holder. Range 3.543 - 5.905" (90.00 - 150.00mm) (FOR HARD SEAT APPLICATIONS)</p> 	

Insert Holders to be used with BH375-WR1 and BH375-R1 Tool Holders

TH1999 Tip Holder

Range using the BH600-R1: .570 - 1.250" (14.48 - 33.52mm) (Using RCA630 Cutting Insert for minimum range) Range with BH375R1: .800 - 1.320" (20.32 - 33.52mm Using RCA630 Cutting Insert for minimum range)



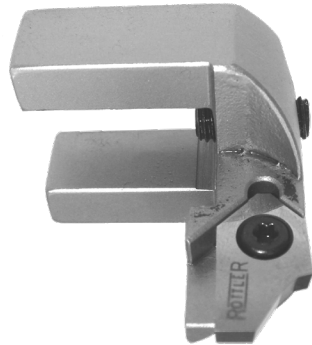
TH2000 Tip Holder

Range using the BH600-R1: .597 - 1.180" (15.16 - 30mm) (Using RCA630 Cutting Insert for minimum range) Range with BH375R1: .800 - 1.395" (20.32 - 35.43mm Using RCA630 Cutting Insert for minimum range)



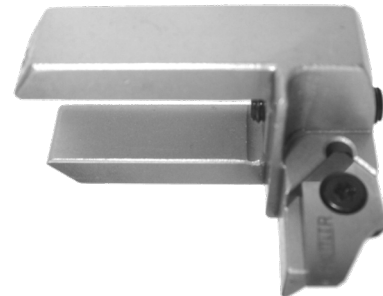
TH2001 Tip Holder

Range using the BH600-R1: .850 - 1.625" (21.6 - 41.3mm) (Using RCA630 Cutting Insert for minimum range) Range with BH375R1: 1.00" - 1.800" (25.4 - 35.4mm Using RCA630 Cutting Insert for minimum range)



TH2002 Tip Holder

Range using the BH600-R1: 1.200 - 2.360" (30.48 - 60.0mm) (Using RCA630 Cutting Insert for minimum range) Range with BH375R1: 1.270 - 2.360" (32.26 - 59.94mm Using RCA630 Cutting Insert for minimum range)



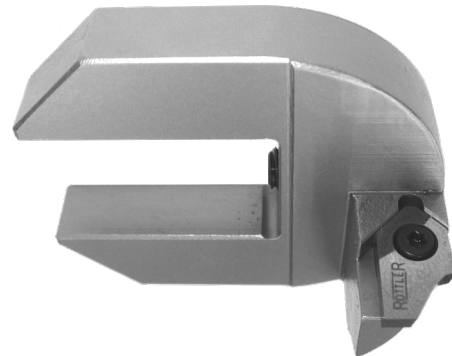
TH2003 Tip Holder

Range: 1.270 - 2.360" (32.26 - 60mm) (Using RCA630 Cutting Insert for minimum range) For BH375WR1 Tool holder Only.



TH2004 Tip Holder

Range: 1.850 - 3.150" (47 - 80mm) (Using RCA630 Cutting Insert for minimum range) For BH375WR1 Tool holder Only.



TH2005 Tip Holder

Range: 2.625 - 4.724" (66.7 - 120mm) (Using RCA630 Cutting Insert for minimum range) For BH375WR1 Tool holder Only.

**Triangular Insert Tip Holders**

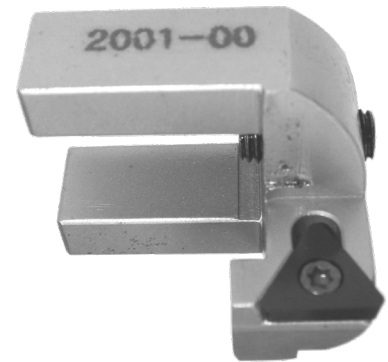
For Valve Seat Installation Counterboring for RT211 (1/4" I.C.) Rottler Triangular Insert Only

TH2000-00

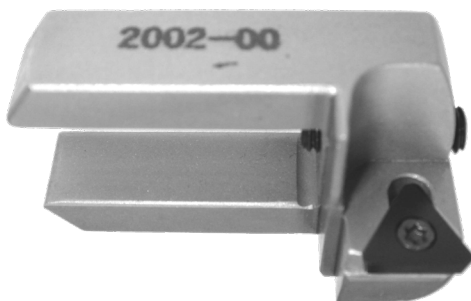
00 Degree Triangular Tip Holder For Valve Seat Installation Counterboring. Uses RT211 (1/4" I.C.) Triangular Insert. Requires BH375R1 Self Aligning Tool holder. Range with BH600-R1 Tool holder .1.055 - 1.400" - with BH375R1: 1.27 - 1.58"

**TH2001-00**

00 Degree Triangular Tip Holder For Valve Seat Installation Counterboring. Uses RT211 (1/4" I.C.) Triangular Insert. Requires BH375R1 Self Aligning Tool holder. Range: 1.100 - 1.570" (28 - 42mm)

**TH2002-00**

00 Degree Triangular Tip Holder For Valve Seat Installation Counterboring. Uses RT211 (1/4" I.C.) Triangular Insert. Requires BH375R1 Self Aligning Tool holder. Range: 1.570 - 2.360" (40 - 60mm)

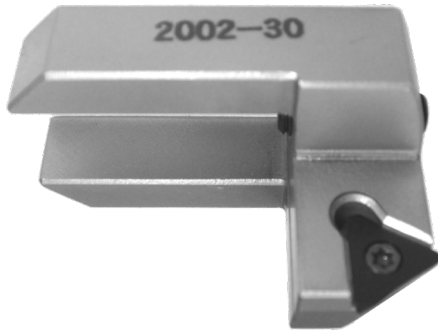
**TH2002-20**

20 Degree Triangular Tip Holder For 20 Degree Valve Seat Angle Cutting. Uses RT211 (1/4" I.C.) Triangular Insert. Requires BH375R1 Self Aligning Tool holder. Range: 1.570 - 2.360" (40 - 60mm)

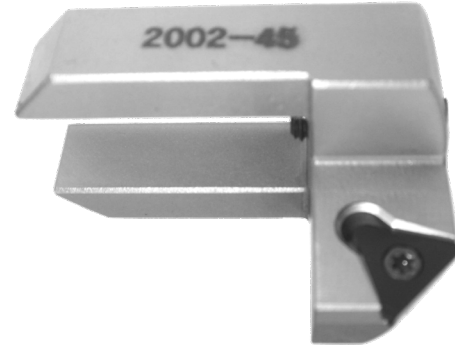


TH2002-30

30 Degree Triangular Tip Holder For 30 Degree Valve Seat Angle Cutting. Uses RT211 (1/4" I.C.) Triangular Insert. Requires BH375R1 Self Aligning Tool holder. Range: 1.570 - 2.360" (40 - 60mm)

**TH2002-45**

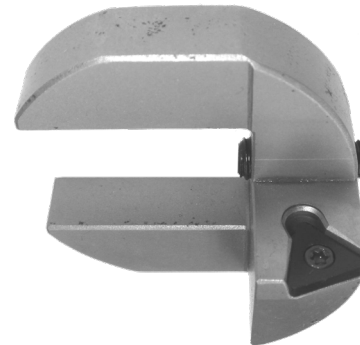
45 Degree Triangular Tip Holder For 45 Degree Valve Seat Angle Cutting. Uses RT211 (1/4" I.C.) Triangular Insert. Requires BH375R1 Self Aligning Tool holder. Range: 1.570 - 2.360" (40 - 60mm)

**TH2003-00**

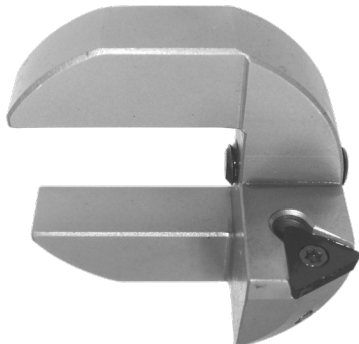
00 Degree Triangular Tip Holder For Valve Seat Installation Counterboring. Uses RT211 (1/4" I.C.) Triangular Insert. Requires BH375WR1 Self Aligning Tool holder. Range: 1.570 - 2.360" (40 - 60mm)

**TH2003-20**

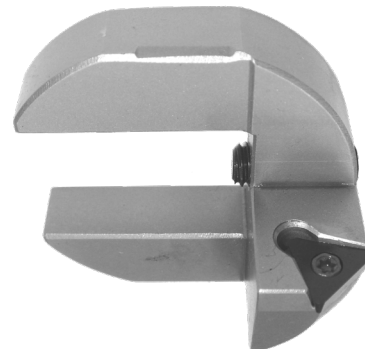
20 Degree Triangular Tip Holder For 20 Degree Valve Seat Angle Cutting. Uses RT211 (1/4" I.C.) Triangular Insert. Requires BH375R1 Self Aligning Tool holder. Range: 1.570 - 2.360" (40 - 60mm)

**TH2003-30**

30 Degree Triangular Tip Holder For 30 Degree Valve Seat Angle Cutting. Uses RT211 (1/4" I.C.) Triangular Insert. Requires BH375R1 Self Aligning Tool holder. Range: 1.570 - 2.360" (40 - 60mm)

**TH2003-45**

45 Degree Triangular Tip Holder For 45 Degree Valve Seat Angle Cutting. Uses RT211 (1/4" I.C.) Triangular Insert. Requires BH375R1 Self Aligning Tool holder. Range: 1.570 - 2.360" (40-60mm)

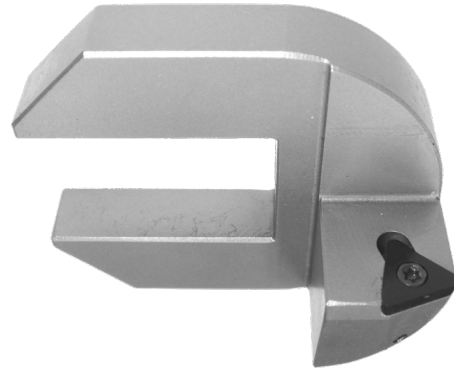


TH2004-00

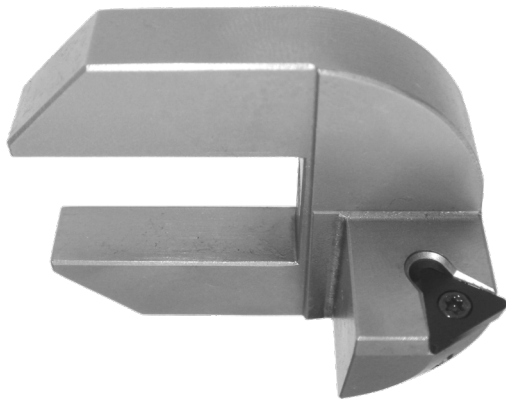
00 Degree Triangular Tip Holder For Valve Seat Installation Counterboring. Uses RT211 (1/4" I.C.) Triangular Insert. Requires BH375WR1 Self Aligning Tool holder. Range: 2.280 - 3.150" (58 - 80mm)

**TH2004-20**

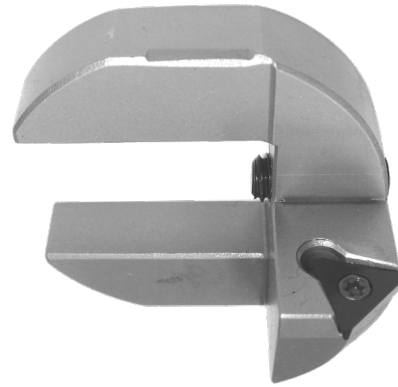
20 Degree Triangular Tip Holder For Valve Seat Angle Cutting. Uses RT211 (1/4" I.C.) Triangular Insert. Requires BH375WR1 Self Aligning Tool holder. Range: 2.280 - 3.150" (58 - 80mm)

**TH2004-30**

30 Degree Triangular Tip Holder For Valve Seat Angle Cutting. Uses RT211 (1/4" I.C.) Triangular Insert. Requires BH375WR1 Self Aligning Tool holder. Range: 2.280 - 3.150" (58 - 80mm)

**TH2004-45**

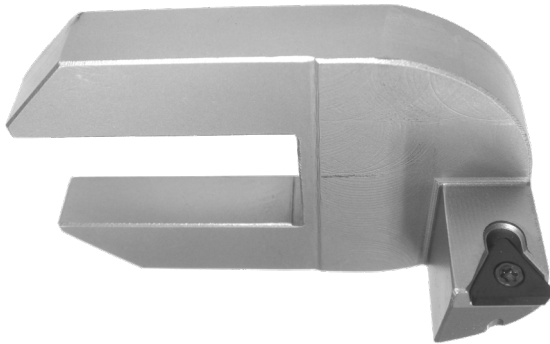
45 Degree Triangular Tip Holder For Valve Seat Angle Cutting. Uses RT211 (1/4" I.C.) Triangular Insert. Requires BH375WR1 Self Aligning Tool holder. Range: 2.280 - 3.150" (58 - 80mm)



Insert Holder for Large Seat to be Used Only on BH375W-RI

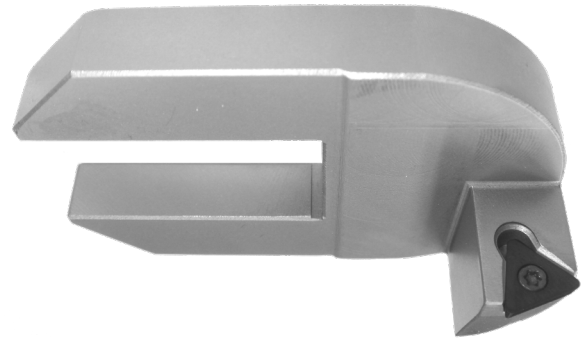
TH2005-00

00 Degree Triangular Tip Holder For Valve Seat Installation Counterboring. Uses RT211 (1/4" I.C.) Triangular Insert. Requires BH375WR1 Self Aligning Tool holder. Range: 3.071" - 4.724" (78mm - 120mm)



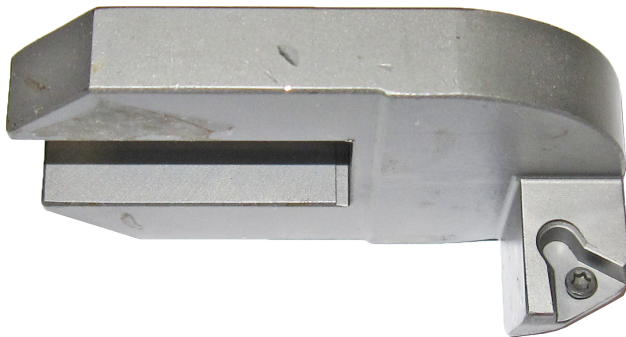
TH2005-20

20 Degree Triangular Tip Holder For Valve Seat Installation Counterboring. Uses RT211 (1/4" I.C.) Triangular Insert. Requires BH375WR1 Self Aligning Tool holder. Range: 3.071" - 4.724" (78mm - 120mm)



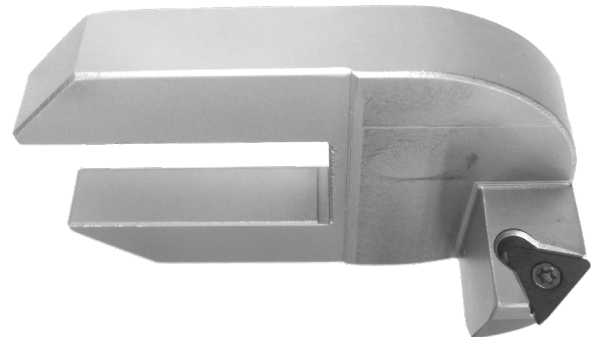
TH2005-30

30 Degree Triangular Tip Holder For Valve Seat Installation Counterboring. Uses RT211 (1/4" I.C.) Triangular Insert. Requires BH375WR1 Self Aligning Tool holder. Range: 3.071" - 4.724" (78mm - 120mm)




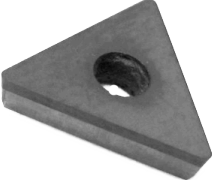



TH2005-45

45 Degree Triangular Tip Holder For Valve Seat Installation Counterboring. Uses RT211 (1/4" I.C.) Triangular Insert. Requires BH375WR1 Self Aligning Tool holder. Range: 3.071" - 4.724" (78mm - 120mm)

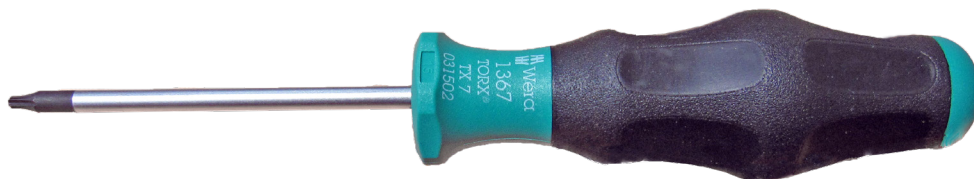


Triangular Inserts and T-7 Torx Driver for Insert Holders

<p>RT211 Triangular Insert 1/4" (6.35mm) I.C., 1/64" radius FOR COUNTERBORING and SINGLE ANGLE INSERT HOLDERS</p> 	<p>RT212 Triangular Insert 1/4" (6.35mm) I.C., 1/32" radius FOR COUNTERBORING and SINGLE ANGLE INSERT HOLDERS</p> 	<p>RT321 Triangular Insert 3/8 1/64" (.397mm) Radius (3/8 triangle Insert holders only) FOR COUNTERBORING AND STRAIGHT ANGLE I FOR INSERT HOLDERS THAT USE TRIANGLE INSERT STYLE.</p> 
<p>RT322 Triangular Insert 3/8 1/32" (.397mm) Radius (3/8 triangle Insert holders only) FOR COUNTERBORING AND STRAIGHT ANGLE I FOR INSERT HOLDERS THAT USE TRIANGLE INSERT STYLE.</p> 	<p>RT211CBN CBN Insert, Triangle, 1/4" IC 1/64" Radius, Hard Valve Seats</p> 	<p>RT321CBN CBN Insert, Triangle, 3/8" IC 1/64" Radius, Hard Valve Seats</p> 

T7D T7 Torx Driver

For RT-211 & RT-212 (1/4" I.C.) insert

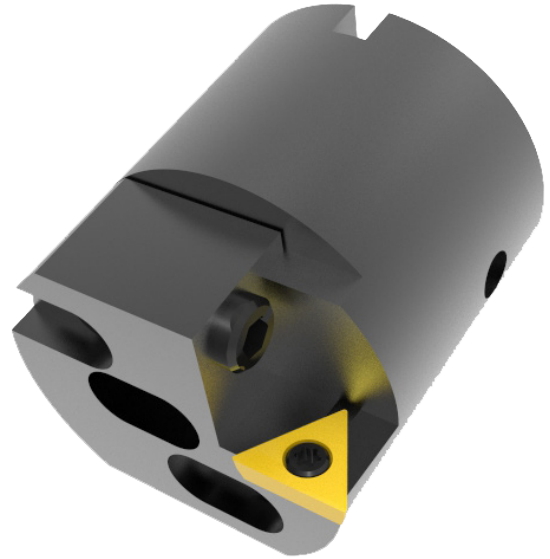


Pre-Settable Adjustable Diameter Valve Seat Housing Cutterheads

7630D Pre-settable Adjustable Diameter Valve Seat Housing Cutterhead

Range 2.08 - 2.68" (52.8 - 68.72mm) Designed for .375" (9.52mm) Shank Pilots.

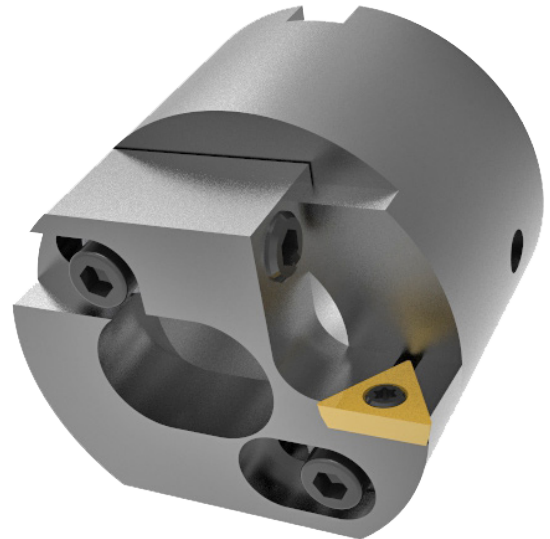
Note: Requires RS105 Driver and BM Micrometer



7630 Pre-Settable Adjustable Diameter Valve Seat Housing Cutterhead

Range 2.599 - 3.233" (66.015 - 82.118mm) Designed for 20mm Shank Pilots.

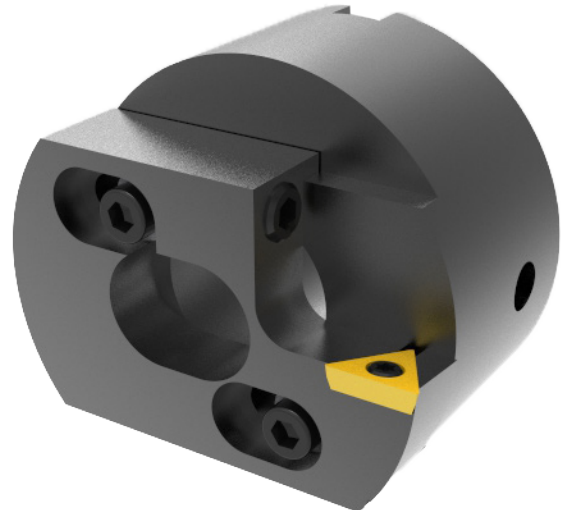
Note: Requires BD3175 Driver and BM20 Micrometer



7630G Pre-Settable Adjustable Diameter Valve Seat Housing Cutterhead

Range 3.180" - 3.790" (80.84 - 96.27mm) designed for 20mm Shank Pilots.

Note: Requires BD3175 Driver and BM20 Micrometer



Rottler R40 Taper Spindle Adapters

COLLETKITR40

Collet chuck set of 10 collets Including: (1/4, 5/16, 11/32, 3/8, 7/16, 1/2, 9/16, 3/4, 7/8, 1.00" Spring Collets) Collet Chuck Spindle Adapter with Collet Nut for Rottler R40 Spindle Taper and Spanner Wrench for Collet Chuck.



SAD375R40EL4 Spindle Adapter

For Rottler R40 Spindle Taper for .375" (9.52mm) Shank Diameter Tools, reamers, drills, etc. includes 2 locking set screws, extended 4" (102.4mm)



SAD750R40 Spindle Adapter

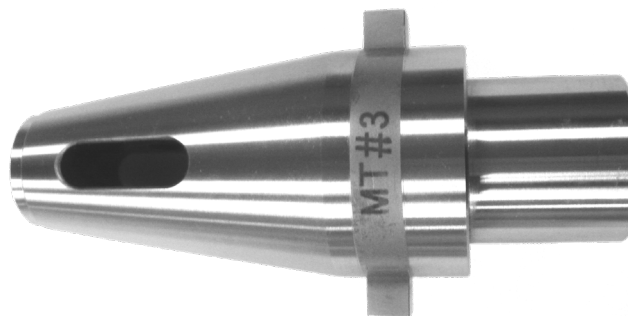
For Rottler R40 Spindle Taper for 3/4" (19.05mm) Shank Diameter Tools, reamers, drills, etc includes 2 locking set screws



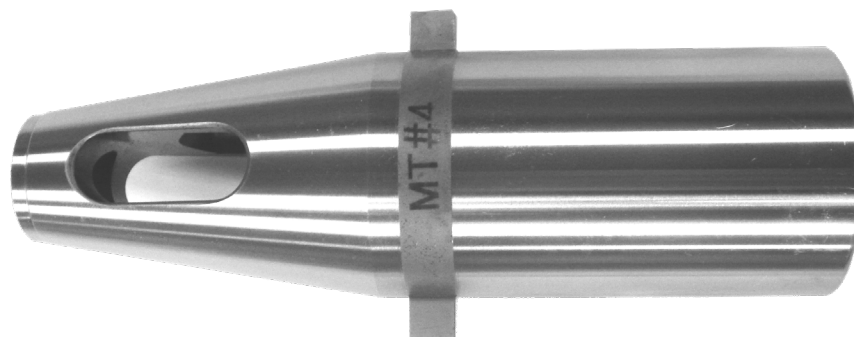
R40MT2 Adapter for Morse #2 to Rottler ISO 40 Spindle Taper



R40MT3 Adapter for Morse #3 to Rottler ISO 40 Spindle Taper



R40MT2EL2 Adaptor for Morse #2 to Rottler ISO 40 Spindle Taper (2" Extended Length)



Suggested Basic Tooling

T7D

T7 Torx driver for 1/4" insert (straight angle insert holders only)



T8D

T8 Torx Tip Holding Screw Driver



T15D

T15 Torx Tip Holding Screw Driver



PRW20

Pilot removable wrench for 20.00mm shack Pilots only



PRW375

Pilot Removal Wrench for .375" pilot shank.



ALLEN-KEYS-IN

INCH Ball end hex Allen Key Set Drivers From: 1/16 - 3/8"



ALLEN-KEYS-MM

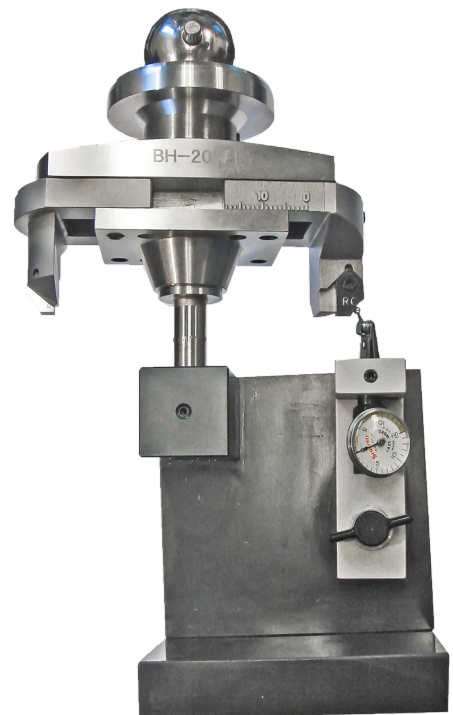
METRIC Ball end hex Allen Key Set



Micrometers Setting Fixtures and Measurement Tools

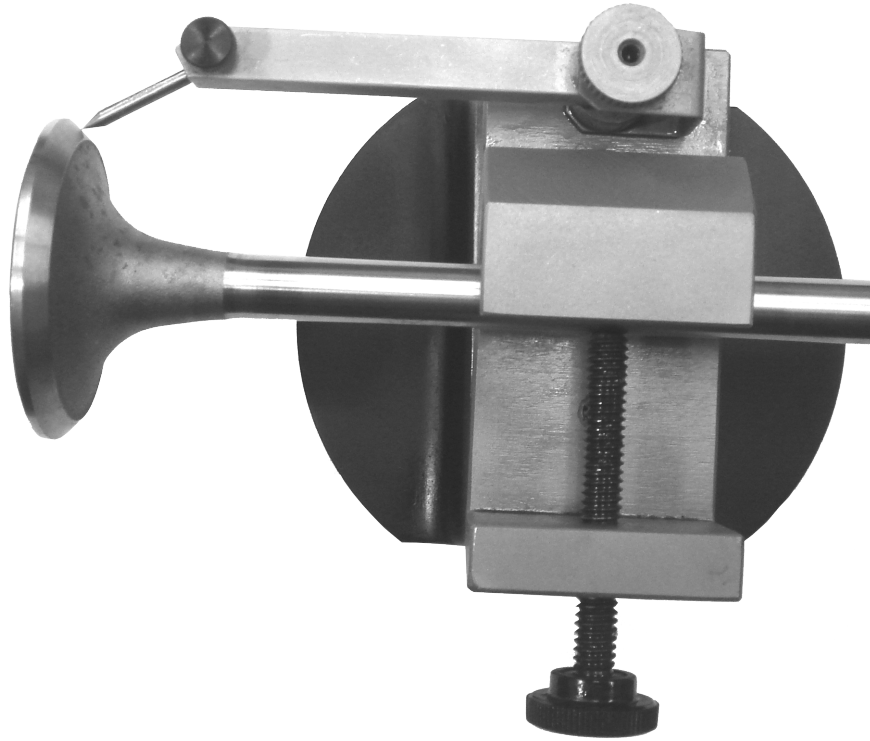
CALFIXT20

Calibration fixture for dual Insert RCC Style on 20mm shank holders Including 502-9-9A Indicator (.001" Resolution)



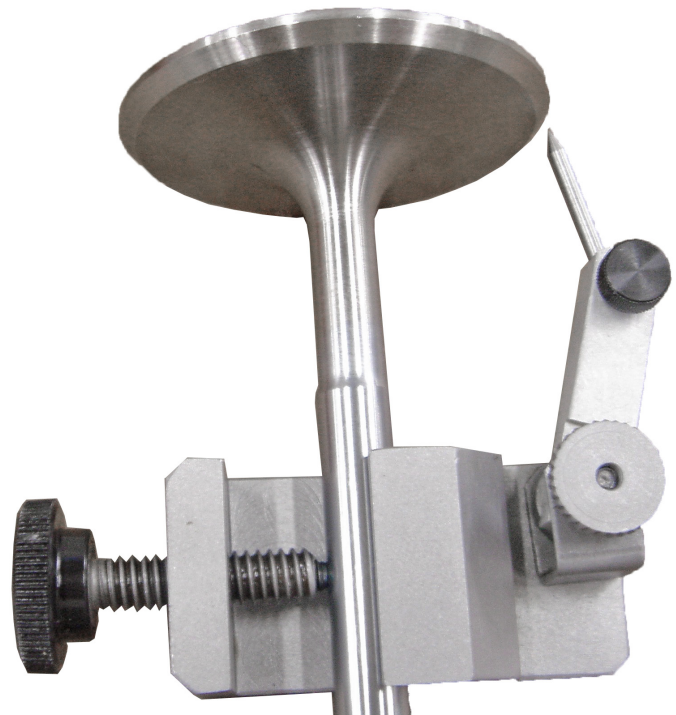
DSP20

Table mount tool setting device with Interchangeable Point for 20.00mm Shank pilots



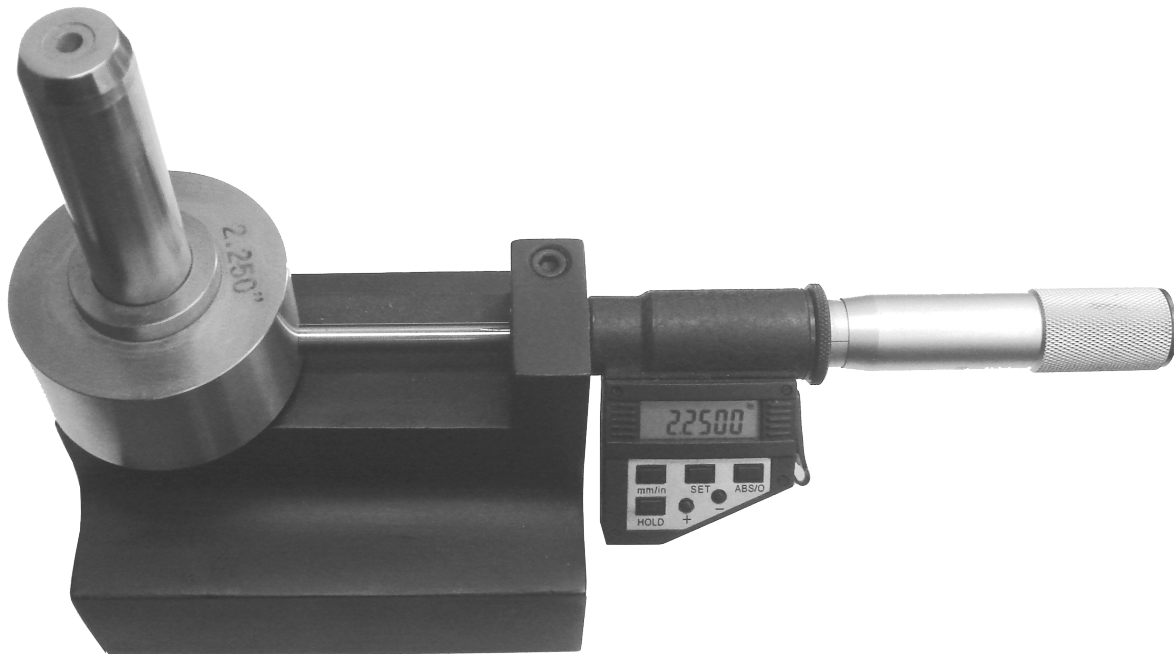
DSP

Tool setting Device with Interchangeable Point



BM20

Counterboring Micrometer Assembly with Digital Reading inch and metric (2.200 - 5.400") For 20mm shank diameter tooling, including Setting Standard

**BM**

Boring Micrometer, Digital Reading Inch and Metric (.800 - 2.80") with setting standard for .375" (9.52mm) and 6.00mm (152.40mm) shank diameter



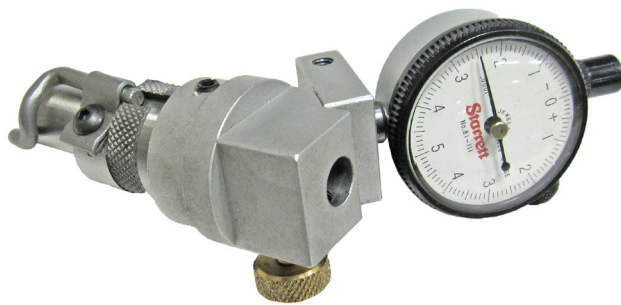
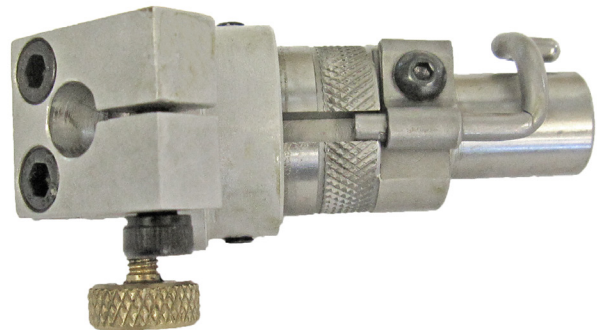
6-1SETTINGFIX

Six in 1 measuring Fixture (Pilot OD, Valve Stem OD, Set diameter On profile inserts, Setting 90 degree counterboring inserts, Set adjustable milling head cutters, Check alignment on valve stem and check roundness on valve stems.



VSG102-375

Precision Valve Seat Concentricity Gage Base Only for .375" Pilot Shank (Must Order dial indicator .0001" or .002mm Metric indicator)



VSG2000

Precision Valve Seat Concentricity Gage Base Only for 20.00mm Pilot Shank
Range 2.362 - 5.905" (60.00 - 150.00mm) Must Order dial indicator .0001" or
.002mm Metric indicator



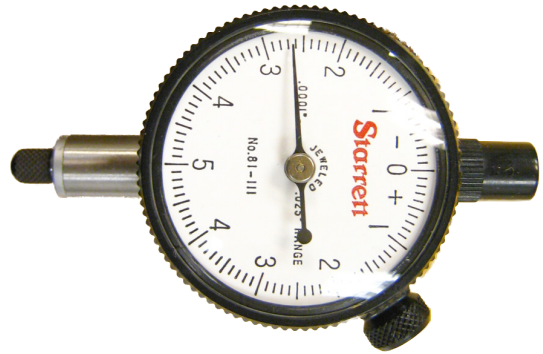
502-11-39L

Mechanical run out indicator for Precision bore adjustment
(.002mm resolution) METRIC



502-11-39D

Mechanical run out indicator for Precision bore adjustment
(.0001 resolution) INCH

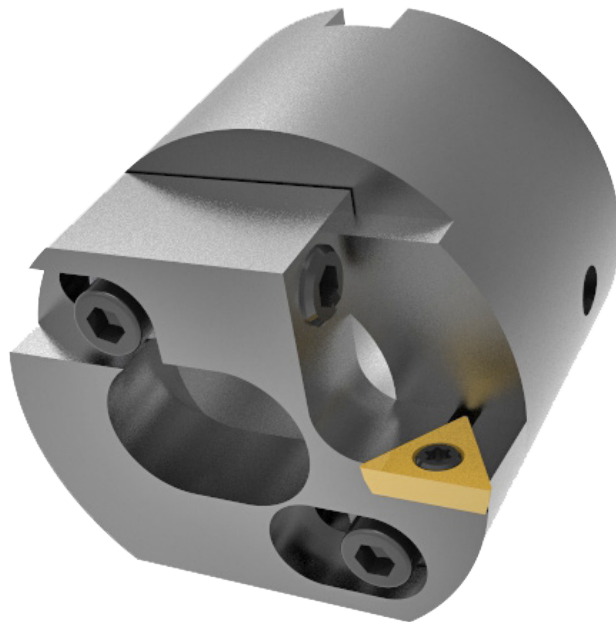


Pre-settable Adjustable Diameter Valve Seat Housing Cutterheads

7630 Pre-settable Adjustable Diameter Valve Seat Housing Cutterhead

Range 2.599 - 3.233" (66.015 - 82.118mm) Designed for 20mm Shank Pilots.

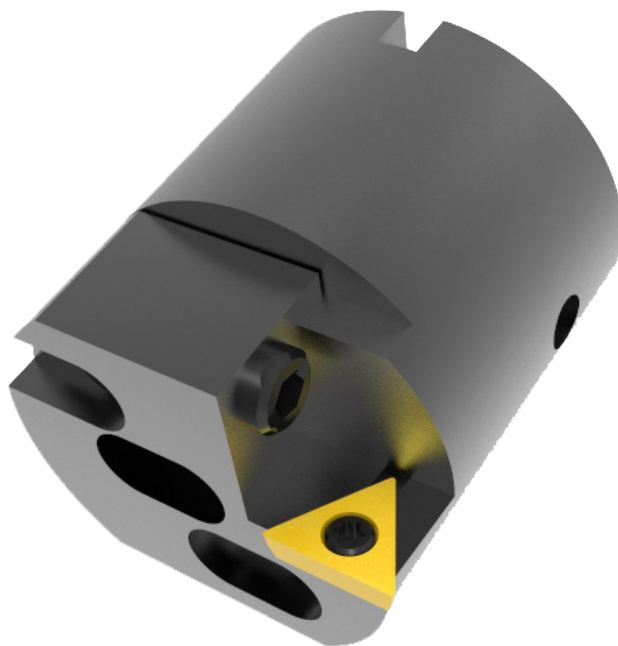
Note: Requires BD3175 Driver and BM20 Micrometer



7630D Pre-settable Adjustable Diameter Valve Seat Housing Cutterhead

Range 2.08 - 2.68" (52.8 - 68.72mm) Designed for .375" (9.52mm) Shank Pilots.

Note: Requires RS105 Driver and BM Micrometer



VALVE SEAT CUTTING INSERTS

NOTE: For Recommended Inserts, see Inserts and Profile Catalog

Select the correct Insert profile to match the original factory valve seat shape. The relief angle and the seating surface width and angle must match.

All specifications can be obtained from the original manufacturer's manual.

Select the proper Insert base on the application RCA insert profiles are design for regular three angle seat profiles, make sure the that top angle will not go over the seat insert,

RCB inserts Profiles are design for a multiple angles and radius and is recommended for High performance profiles.

RCC Inserts are made from larger/thicker carbide and use a T15 Torx Screw. RCC inserts are designed for large diameter valve seats.

Cutting Insert Sharpener for Multi Angle Inserts

BWSDH20 Heavy Duty Diamond Wheel Insert Sharpener

With each honing brush for 20.00mm and 9.52mm Shank Tooling



BWS02 Diamond Wheel Cutting Bit Sharpener - Single Wheel



Rottler Special Profile Cutter Inserts Policy

Special Profile Cutter Inserts can be manufactured to your exact specifications and can include a combination of angles and radius blends. Special Profile Carbide Cutter Bits are generally considered to be "Customer Proprietary". These are uniquely numbered, exclusively for the ordering customer.

Drawing Fee	There is a one-time drawing fee per each Special Profile Cutter Insert (A or B)
RCSXXX	On orders of 1-9 A or B Blank Special Profile after drawing fee charge
RCSXXX	On orders of 10+ A Blank Special Profile after drawing fee charge
RCSXXX	On orders of 10+ B Blank Special Profile after drawing fee charge

Available Carbide Pilots by Diameter and Length

NOTE: For Recommended Fixed Carbide, See SG Pilot Catalog.

UCPM-MINI	UNIPILOT Carbide Pilots with 6.00mm Shank Diameter / 5.700" long range from 3.50 - 7.00mm to be used on BH600-R1 Tool Holder and TH1999 Tip Holder)
UCP-5TO10STD	UNIPILOT Carbide Pilots UCP .375" (9.52mm) Shank Diameter / Total Length 7.500" Range from .196 - .394" (5.00 - 10.00mm)
UCP-10TO12STD	UNIPILOT Carbide Pilots UCP .375" (9.52mm) Shank Diameter / Total Length 7.500" Range from .390 - .470" (10.01 - 12.00 mm)
UCP-12TO14STD	UNIPILOT Carbide Pilots UCP .375" (9.52mm) Shank Diameter / Total Length 7.500" Range from .470 - .550" (12.01 - 14.00 mm)
UCP-14TO16STD	UNIPILOT Carbide Pilots UCP .375" (9.52mm) Shank Diameter / Total Length 7.500" Range from .551 - .630" (14.01 - 16.00mm)
UCP-UNDER10-9EL	UNIPILOT Carbide Pilot .375" (9.52mm) Shank Diameter Below .390" 10.00mm (9.00" extended length)
UCP-10TO14-9EL	UNIPILOT Carbide Pilot .375" (9.52mm) Shank Diameter (9.00" extended length) from 10.02 - 14.50mm
UCP-14TO16-9EL	UNIPILOT Carbide Pilot .375" (9.52mm) Shank Diameter (9.00" extended length) from 14.02 - 16.00mm
UCP-16TO19-9EL	UNIPILOT Carbide Pilot .375" (9.52mm) Shank Diameter (9.00" extended length) from 16.02 - 19.50mm
UCP-10TO14-12EL	UNIPILOT Carbide Pilot .375" (9.52mm) Shank Diameter (12.00" extended length) from 10.02 - 14.50mm
UCP-20MM	Any UNIPILOT Carbide Pilot 20.00mm Shank Diameter Up to 22.00mm pilot Diameter

Extended Length Large Shank 20.00mm(.787") Diameter Pricing

UCP-XXXX-1220	.560" UNIPILOT Carbide Pilot (20.00mm) Shank diameter (12.00" Length)
UCP-XXXX-1320	.560" UNIPILOT Carbide Pilot (20.00mm) Shank diameter (13.00" Length)
UCP-XXXX-1520	.560" UNIPILOT Carbide Pilot (20.00mm) Shank diameter (15.00" Length)

Modular Pilots by Diameter and Length

See SG Pilot Catalog for details

FCM20EL380 Modular Carbide Centralizing Pilot for Valve Guides Over 0.875" (22.23mm). Requires a set of Interchangeable Sleeves (FCMSLXXX & FCMSUXXX) - 20mm Shank Pilot

FCMUSXXX Modular Pilot Upper (Tapered) Sleeve - Hardened and Heat Treated - For .XXX" (XX.XXmm) Guide ID

FCMSLXXX Modular Pilot Lower (Straight) Sleeve - Hardened and Heat Treated - For .XXX" (XX.XXmm Guide ID - 3.0" Overall Length

See SG Pilot Catalog for additional modular pilot information and part numbers

If required diameter is not listed, semi finished modular pilot sleeves are available and customer is able to finish to suit requirements. If customer requires Rottler to manufacture modular sleeves, Customer Must Provide the Size, Including Tolerance, of the Valve Guides the Sleeves Will be Used in. Rottler will use this information to Design the Actual Pilot Sleeves.

See Special Pilot Order Form in the SG Pilot Catalog for more information.

Miscellaneous Tooling

COLLETKITR40

Collet chuck set of 10 collets Including: (1/4, 5/16, 11/32, 3/8, 7/16, 1/2, 9/16, 3/4, 7/8, 1.00" Spring Collets) Collet Chuck Spindle Adapter with Collet Nut for Rottler R40 Spindle Taper and Spanner Wrench for Collet Chuck.



ER40-250

1/4" (6.35mm) ER40 Spring Collets
From .236 - .275" (5.99 - 6.98mm)

**ER40-312**

5/16" (7.92mm) ER40 Spring Collets
From .275 - .314" (6.98 - 7.98mm)

**ER40-343**

11/32" (8.71mm) ER40 Spring Collets
From .314 - .354" (7.98 - 8.99mm)

**ER40-375**

3/8" (9.52mm) ER40 Spring Collets
From .354 - .393" (8.99 - 9.98mm)

**ER40-437**

7/16" (11.10mm) ER40 Spring Collets
From .433 - .472" (11.00 - 11.98mm)

**ER40-500**

1/2" (12.70mm) ER40 Spring Collets
From .472 - .511" (11.98 - 12.979mm)

**ER40-562**

9/16" (14.27mm) ER40 Spring Collets
From .551 - .590" (14.00 - 14.99mm)

**ER40-750**

3/4" (19.05mm) ER40 Spring Collets
From .748 - .787" (19.00 - 19.99mm)

**ER40-875**

7/8" (22.23mm) ER40 Spring Collets
From .866 - .905" (22.00 - 23.00mm)

**ER40-1000**

1.000" ER40 Spring Collets From .984 - 1.020" (25.00 - 26.00mm)

**ER40SW**

ER40 Spanner Wrench for Collet Chuck (CCWSETR40 Only)



COLLET40-BOX

Collets box for 10 collets and Holder



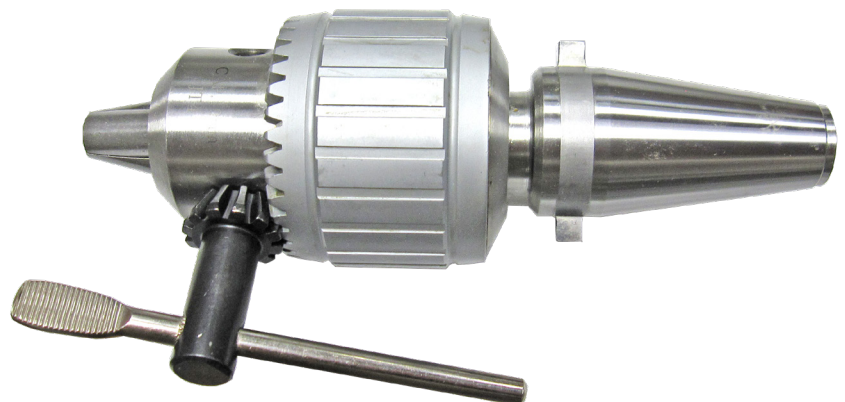
CCWSETR40

Collet Chuck Spindle Adapter (ER40 / ISO40) with Collet Nut for Rottler R40 Spindle Taper (for ER 40 Collets only)



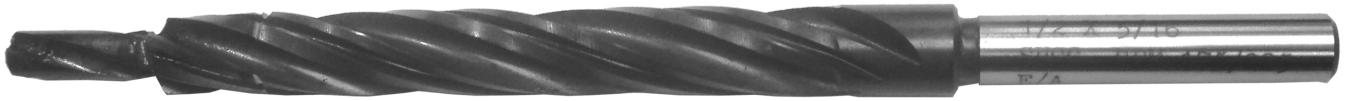
PC750R40

Drill chuck for SG80A - Max capacity .750" (19.05mm)



CDR312 Combo Core drill / Reamer

.312" Pilot to bore for standard 1/2" OD valve guide insert with .375" diameter Shank, requires SAD375R1 spindle adapter or to be used with collet holder



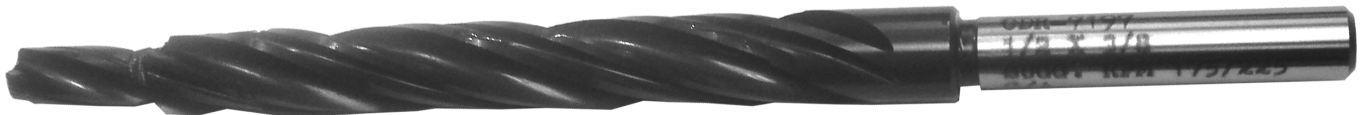
CDR343 Combo Core drill / Reamer

.343" Pilot to bore for standard 1/2" OD valve guide insert with .375" diameter Shank, requires SAD375R1 spindle adapter or to be used with collet holder



CDR375 Combo Core drill / Reamer

.375" Pilot to bore for standard 1/2" OD valve guide insert with .375" diameter Shank, requires SAD375R1 spindle adapter or to be used with collet holder



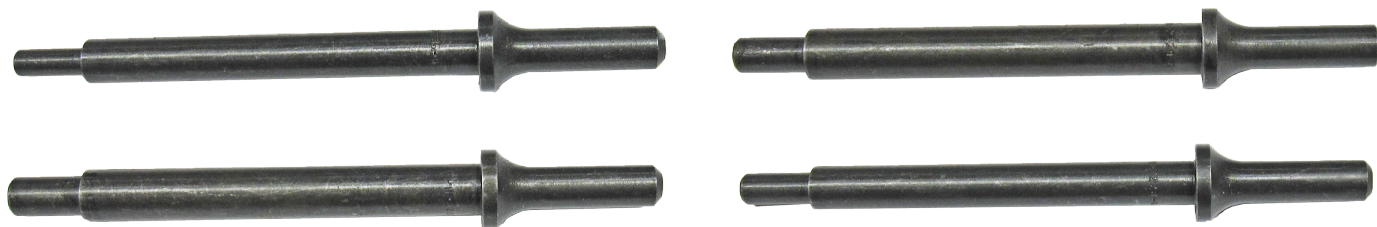
VSD100-KIT Valve Seat Driver Kit

Includes Seat Driver Body (VSD101) 5 Dual seat Ring Adapters (VSD102 1 - 1.1/8", VSD103 1.1/4 - 1.3/8", VSD104 1.1/2 - 1.5/8", VSD105 1.3/4 - 1.7/8", VSD106 2 - 2.1/8"), 5 Solid Tapered Pilots STP0250, STP0275, STP0312, STP0343, STP0374



VGD-KIT Valve Guide Driver Kit

Includes .312" Valve Guide Driver, .343" Valve Guide Driver, .372" Valve Guide Driver and 7.0mm Valve Guide Driver (requires air hammer - not available from Rottler)



VGTC-KIT3 Valve Guide Top Cutter Kit

With 1/2" straight Shank. To be used with Collet holder or SAD500R1 Spindle Adapter. Kit includes 5/16", 11/32" & 3/8" pilot for guide top cutter

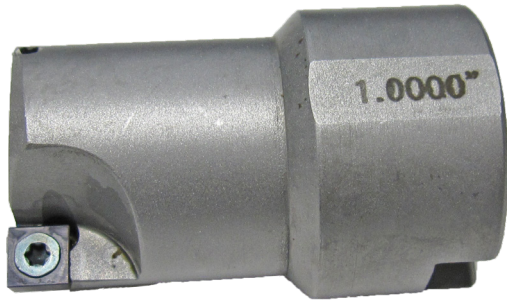


Fixed Double Insert Milling Heads

FMH Fixed Double Replaceable Insert Milling Heads - Bore diameter 1.25 - 2.50" (31.75 - 63.50mm) available in increments of 1/16" (.125") (Requires Milling Head driver) (specify size)

FMH1000R1 1.0000" Fixed Double Replaceable Insert Milling Head

With .562" Driver (Requires BD560 .562" ID Milling head Driver)



FMH10625R1 1.0625" Fixed Double Replaceable Insert Milling Head

With .562" Driver ID (Requires BD560 .562" ID Milling head Driver)



FMH11250R1 1.1250" Fixed Double Replaceable Insert Milling Head

With .562" Driver ID (Requires BD560 .562" ID Milling head Driver)



FMH11875R1 1.1875" Fixed Double Replaceable Insert Milling Head

With .562" Driver ID (Requires BD560 .562" ID Milling head Driver)



FMH12460R1 1.2460" Fixed Double Replaceable Insert Milling Head

With .562" Driver ID (Requires BD560 .562" ID Milling head Driver)



FMH12480R1 1.2480" Fixed Double Replaceable Insert Milling Head

With .562" Driver ID (Requires BD560 .562" ID Milling head Driver)



FMH12500R1 1.2500" Fixed Double Replaceable Insert Milling Head

With .562" Driver ID (Requires BD560 Milling Head Driver)

**FMH13125R1 1.3125" Fixed Double Replaceable Insert Milling Head**

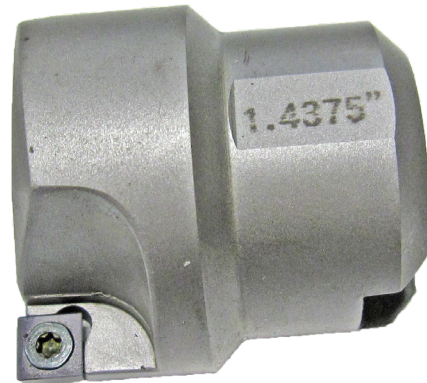
With .562" Driver ID (Requires BD560 .562" ID Milling head Driver)

**FMH13750R1 1.3750" Fixed Double Replaceable Insert Milling Head**

With .562" Driver ID (Requires BD560 .562" ID Milling head Driver)

**FMH14375R1 1.4375" Fixed Double Replaceable Insert Milling Head**

With .562" Driver ID (Requires BD560 .562" ID Milling head Driver)

**FMH15000R1 1.5000" Fixed Double Replaceable Insert Milling Head**

With .562" Driver ID (Requires BD560 .562" ID Milling head Driver)

**FMH15625R1 1.5625" Fixed Double Replaceable Insert Milling Head**

With .562" Driver ID (Requires BD560 .562" ID Milling head Driver)



FMH16250R1 1.6250" Fixed Double Replaceable Insert Milling Head

With .562" Driver ID (Requires BD560 .562" ID Milling head Driver)



FMH16870R1 1.6870" Fixed Double Replaceable Insert Milling Head

With .562" Driver ID (Requires BD560 .562" Id Milling Head Driver)



FMH16875R1 1.6875" Fixed Double Replaceable Insert Milling Head

With .562" Driver ID (Requires BD560 .562" ID Milling head Driver)



FMH17500R1 1.7500" Fixed Double Replaceable Insert Milling Head

With .562" Driver ID (Requires BD560 .562" ID Milling head Driver)



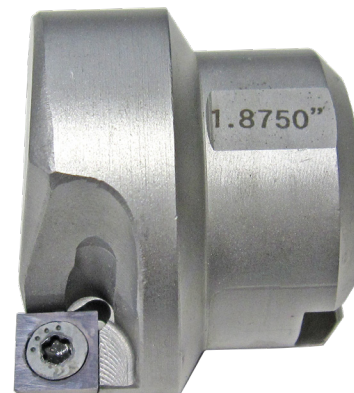
FMH18125R1 1.8125" Fixed Double Replaceable Insert Milling Head

With .562" Driver ID (Requires BD560 .562" ID Milling head Driver)



FMH18750R1 1.8750" Fixed Double Replaceable Insert Milling Head

With .562" Driver ID (Requires BD560 .562" ID Milling head Driver)



FMH19370R1 1.9370" Fixed Double Replaceable Insert Milling Head

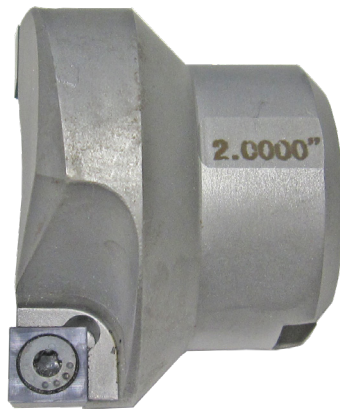
With .562" Driver ID (Requires BD560 .562" Id Milling Head Driver)

**FMH19375R1 1.9375" Fixed Double Replaceable Insert Milling Head**

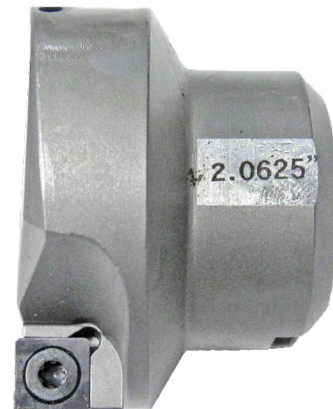
With .562" Driver ID (Requires BD560 .562" Id Milling Head Driver)

**FMH20000R1 2.0000" Fixed Double Replaceable Insert Milling Head**

With .562" Driver ID (Requires BD560 .562" ID. Ball Head Milling head Driver)

**FMH20625R1 2.0625 Fixed Double Replaceable Insert Milling Head**

With .562" Driver ID (Requires BD560 .562" Id Milling Head Driver)

**FMH21250R1 2.125" Fixed Double Replaceable Insert Milling Head**



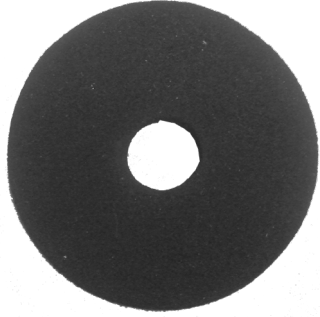
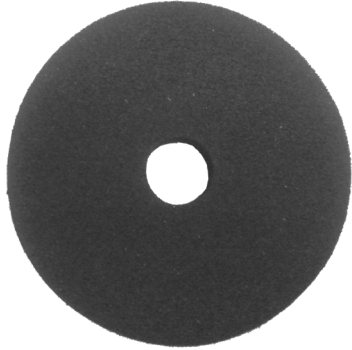
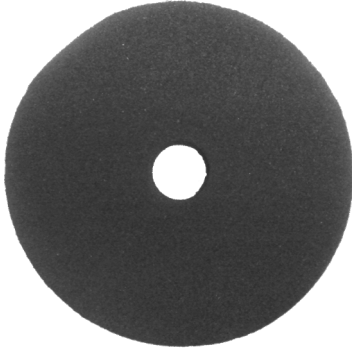
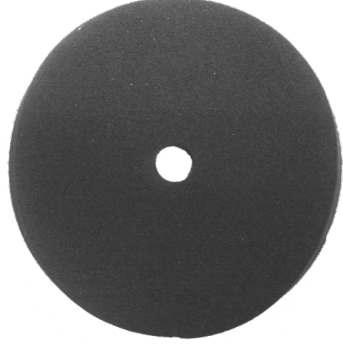
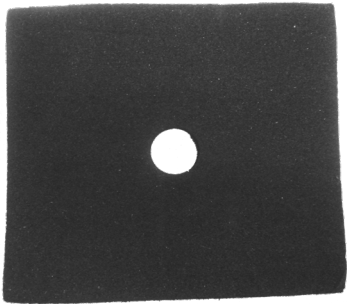
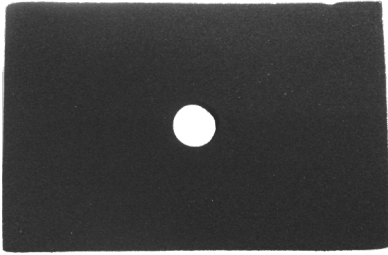
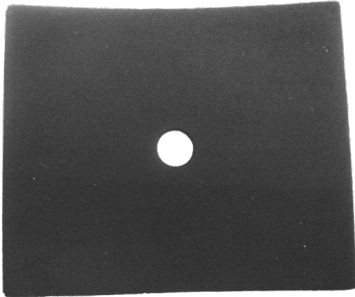
With .562" Driver ID (Requires BD560 .562" Id Milling Head Driver)

**FMH22500R1 2.250" Fixed Double Replaceable Insert Milling Head**

With .562" Driver ID (Requires BD560 .562" Id Milling Head Driver)



Consumable Parts for Seat and Guide Models

<p>SLEEVER1 Spindle Adapter Replacement Sleeve</p> 	<p>BSW002 Diamond Wheel Cutting Bit Sharpener replacement Wheel (3.000" Diameter OD by .375" ID)</p> 	<p>VT-FP1562 Replacement Foam Pad For Round Vacuum Pad 1.562" (39.675mm) diameter</p> 
<p>VT-FP1875 Replacement Foam Pad For Round Vacuum Pad 1.875" (47.625mm) diameter</p> 	<p>VT-FP2125 Replacement Foam Pad For Round Vacuum Pad 2.125" (53.975mm) diameter</p> 	<p>VT-FP3125 Replacement Foam Pad For Round Vacuum Pad 3.125" (79.375mm) diameter</p> 
<p>VT-FP25X22 Replacement Foam Pad For Square Vacuum Pad 2.500 X 2.250" (63.5 X 57.15mm) square</p> 	<p>VT-FP31X20 Replacement Foam Pad For Square Vacuum Pad 3.125 X 2.000" (79.375 X 50.8mm) square</p> 	<p>VT-FP33X27 Replacement Foam Pad For Square Vacuum Pad 3.375 X 2.750" (85.725 X 69.85mm) square</p> 

<p>PRW600PIN Replaceable Pin For PRW600 Pilot Removable wrench tool</p> 	<p>PRW375PIN Replaceable Pin For PRW375 Pilot Removable wrench tool</p> 	<p>PRW20PIN Replaceable Pin For PRW375 Pilot Removable wrench tool</p> 
<p>511-29-12E Torx Screw M2.5 X 0.45 (straight angle insert holders only)</p> 	<p>T7D T7 Torx Driver For 1/4" insert (straight angle insert holders only)</p> 	
<p>T8S T8 Torx Tip Holding Screws</p> 	<p>T15S T15 Torx Tip Holding Screws</p> 	<p>S1032-250 BH375R1 and BH600R1 Tip Holder Locking Screw 10/32" X 1/4" (requires 2)</p> 
<p>S250-28-250 BH375WR1 Tip Holder Locking Screw 1/4"-28" X 1/4" (requires 2)</p> 	<p>S1032-437 TH1999 Adjusting Screw (10/32 X 7/16")</p> 	<p>S1032-375 TH2000 Adjusting Screw (10/32 X 3/8")</p> 
<p>S1032-500 TH2001 Adjusting Screw (10/32 X 1/2")</p> 	<p>S1032-625 TH2002 Adjusting Screw (10/3" X 5/8")</p> 	<p>S500-1600 TH2003 Adjusting Screw (6.00 X 16mm)</p> 
<p>S600-2015 TH2004 Adjusting Screw (6.00 X 20.15mm)</p> 	<p>ICC003 Insert, Indexable Carbide For Fixed milling heads - large size - for 1.562" and larger cutters</p> 	<p>ICC002 Insert, Indexable Carbide For Fixed milling heads - small size - for 1.250 - 1.500" cutters</p> 